

**LEWMAR®**

# Portlight Spares Book

Edition 2 – 20<sup>th</sup> December, 2000

## Contents

**Product Marking & Date Coding**

**Product Identification Tables**

**Portlights :** (Old) Standard

New Standard

Atlantic

Ocean

**Warranty Statement**

# LEWMAR®

---

## HATCH & PORTLIGHT PRODUCT MARKING & DATE CODING

All Lewmar Hatches and Portlights (except old Standard) produced since October 1997 have had identification information stamped on the acrylic. On Portlights and Fixedlights the information is under the  $\alpha\beta\gamma\delta$  branding. On hatches the information is between the right hand handle and the edge of the acrylic.

The information is:-

### 1) Range Name & Hatch Size

For Hatches; Ocean, Coastline, Trimport, Triline or Concept

For Portlights; Standard (New Standard only), Atlantic, Ocean or ASTAR (Hallberg Rassy only)

Or

A number in the form "399SSXR" for example 3996003 where:-

SS is the hatch size, in the example Size 60

X is the acrylic colour as per Table X in the spares book, in the example 0 for grey

R is the Range, 3 is Low Profile, as in the example, and 2 is Medium Profile

On Mark 2 Low & Medium Profile hatches the number is preceded by and "A" for example "A3996002"

Or

A number in the form "300XXX" for example 300380. This is the first 6 digits of a hatch or portlight custom product part number, in this case it would be 300380000

### 3) The date

In the form "DDMY" for example 11J7 where:-

11 is the eleventh day of the month

J is the month of September

7 is the year 1997, the year 2000 will be 0.

The letter code for the month is:-

A = January

B = February

C = March

D = April

E = May

F = June

The letter I "India" is not used

G = July

H = August

J = September

K = October

L = November

M = December

### Box Label

The bar code label on the box also contains a date code in the form 9739 where:-

97 is the year

39 is the week of the year

### White Sticky Label On Alloy Frame

The white sticky label is from our anodising sub-contractors. It is in the form "100E 5", where:-

100 is the 100th day of the year

E is the year 1997 (1998 will be F)

5 is an code for additional production information

### Date Code Stamped Into Alloy Frame

The Lewmar date code is stamped under the lid extrusion and is in the same form as the date code outlined above for the acrylic stamping

## Lewmar Portlight Identification

Portlights Produced after October 1997 (with the exception of the Old Standard) have Lewmar, the name of the range, the portlight size, and a date code stamped on the acrylic

Feature	Portlight Range				
	(Old) Standard	(New) Standard	Atlantic Mk.1	Atlantic Mk.2	Ocean
Production Dates	1982-'98	1997-now	1994-2000	2000-now	1990-now
Alloy frame around acrylic			✓	✓	✓
Plastic handles turned like keys to close	✓				
Plastic handles pushed to close		✓		✓	✓
Metal Handle pushed to close			✓ 4 style lines on handle	Plastic or metal handles with 3 style lines	
Portlight clicks through a series of positions at which it will stay open	✓				✓

# LEWMAR®

## (Old) Standard Portlight

**Build Dates :** The (Old) Standard Portlight was manufactured from 1982 to 1998 (check the [Portlight Identification Table](#) for ranged with overlapping production dates).

**Identification :** The outer frame has a join at each end and the portlight handles close with an action similar to turning a key

**Sizing & Dimensions :** [See Table](#)

**Instructions :**

General Installation & Adjustment B2073 Iss H

Seal Replacement B5963-A & B

**Spares Kits :**

Portlight Hinge Kits B5500-1

Portlight Handle Kits (Left & Right Hand) B5501-1

Portlight & Fixedlight Inner Frames (Clamp Rings) B5503-3

Portlight Acrylics B5504-3

Portlight Trims B5505-3

Fixedlight Trims B5505A-3

Portlight Seal Kits B5515-3

Portlight Flyscreens B5516-1

## **Old Standard Portlight**

Overall, Cutout, Opening & Acrylic Dimensions

Portlight Size	Old Name For Size	Portlight Overall Dims		Portlight Cutout Dims		Portlight Opening Dims		Acrylic Overall Dims		Trim Overall Dims (aperture = -26)	
		Width (mm)	Length (mm)	Width (mm)	Length (mm)	Width (mm)	Length (mm)	Width (mm)	Length (mm)	Width (mm)	Length (mm)
0	4 x 10	177	323	156	303	109	256	117	264	152	299
1	5 x 12	193	369	171	347	124	300	132	309	167	343
2	4 x 14	177	427	156	405	109	358	117	367	152	401
3	5 x 15	193	451	171	429	124	382	132	392	167	425
4	5 x 23	193	649	171	627	124	580	132	588	167	623
4L or 46	n/a	Tapered	710	Tapered	688	Tapered	641	Tapered	649	Tapered	649
4R or 44	n/a	Tapered	710	Tapered	688	Tapered	641	Tapered	649	Tapered	649
5	7 x 15	266	451	244	429	197	382	205	392	240	425
see table	3 x 15	148	451	125	428			86	392		

[Go to Contents page](#)

[Go to Old Standard Portlight Page](#)

# LEWMAR®

## New Standard Portlight

**Build Dates :** The New Standard Portlight started production in 1997 and is still in build (check the [Portlight Identification Table](#) for ranged with overlapping production dates).

**Identification :** Plastic handles which are pushed to close and are glued to the acrylic

**Sizing & Dimensions :** [See Table](#)

**Instructions :**

New Standard Portlight & Fixedlights	B5960 Iss.E
New Standard Portlight Flyscreens	B5961 Iss.B
New Standard Portlight Seals	B5967-A & B

**Spares Kits :**

Portlight Seal Kits	B5790-3
Portlight Window Kits (with Handles)	B5791-4
Portlight Handle Kit (one Handle)	B5792-2
Portlight Hinge Pin Kit (one pin)	B5793-2
Portlight Outer Frames (with seal)	B5794-3
Port & Fixedlight Inner Frames (Clamp Rings)	B5795-3
Fixedlight Outer Frames & Window	B5796-3
Fixedlight Trims	B5797-3
Portlight Trims	B5798-3
Flyscreens	B5799-3

## **New Standard Portlight**

Overall, Cutout, Opening, Acrylic and Trim Dimensions

Portlight Size	Portlight Overall Dims		Portlight Cutout Dims		Acrylic Overall Dims *		Trim o/all dimesions		Trim inside dims (not way of handle or hing	
	Width (mm)	Length (mm)	Width (mm)	Length (mm)	Width (mm)	Length (mm)	Width (mm)	Length (mm)	Width (mm)	Length (mm)
0	176	323	156	303	119	266	180	328	129	276
1	191	367	171	347	134	310	195	372	144	320
2	176	425	156	405	119	368	180	429	129	378
3	191	449	171	429	134	392	195	453	144	402
4	191	646	171	627	134	589	195	651	144	599
4L or 46	Tapered	708	Tapered	688	Tapered	651	Tapered	609	Tapered	661
4R or 44	Tapered	708	Tapered	688	Tapered	651	Tapered	609	Tapered	661
5	264	449	244	429	207	392	269	453	217	402
6					89	392				

\* Excluding Handle & Hinge Lugs

[Go to Contents page](#)

[Go to New Standard Portlight Page](#)

# LEWMAR®

## Atlantic Portlight

**Build Dates :** The Atlantic Portlight started production in 1994. The fixed version has never been changed but in 2000 the Mk2 of the opening version started production (check the [Portlight Identification Table](#) for ranged with overlapping production dates).

**Identification :** The outer frame has a single welded joint. The acrylic lens is held in an alloy frame. The handles are push to close and locate in composite catch blocks.

The Mk.1 opening Portlight has stainless steel handles with 4 styling lines. The Mk.2 opening Portlight has stainless or composite handles with 3 styling lines

**Sizing & Dimensions :** [See Table](#)

**Instructions :** General Installation & Adjustment B4046 Iss C

**Spares :** **Unless stated otherwise spares fit both Mk.1 and Mk.2**

Catch Block	B5685-3
Fixedlight Acrylic Frame (with acrylic)	B5693-3
Flyscreen	B5753-3

Hinge Block (attaches to Outer Frame)	B5686-1
Hinge Pin	B5688-1
Portlight Seal Kits	B5690-3

Mk 1. Handle Kit	B5684-2
Mk 2. Handle Kit	B5792-2
Mk 1. & Mk.2 Portlight Window Kit	B5692-3

<b>Valances :</b> Fixedlight 11.5mm Valance	B5699-2
Fixedlight Flat Valance	B5695-3

Portlight 11.5mm Valance	B5698-4
Portlight Flat Valance	B5696-3

Drawing Showing All Valances	E0101
------------------------------	-------

## **Atlantic Portlight Specifications**

Size	Overall Dimensions			Cut Out Dimensions			Aperture Dimensions		
	Width (mm)	Length (mm)	Radii (mm)	Width (mm)	Length (mm)	Radii (mm)	Width (mm)	Length (mm)	Radii (mm)
10	174	304	71	154	284	61	154	284	61
30	200	400	71	180	380	61	180	380	61
32	200	400	100	180	380	90	180	380	90
40	200	480	71	180	460	61	180	460	61
52	241	559	71	221	539	61	221	539	61
60	200	600	71	180	580	61	180	580	61
64	200	650	71	180	630	61	180	630	61

[Go to Contents page](#)

---

[Go to Atlantic Portlight Page](#)

# LEWMAR®

## Ocean Portlight

**Build Dates :** The started production in 1990 and is still being built (check the [Portlight Identification Table](#) for ranged with overlapping production dates).

**Identification :** Cast outer frame with no join, alloy frame around the acrylic, push to close handles

**Notes :** Fixedlights are portlights with the handles replaced by a solid block

	Drawing No
<b>Instructions :</b>	
General Installation & Adjustment	B4055 Iss B
Ocean Portlight Micro Switch Kit	B5883-B
<b>Spares Kits :</b>	
Hinge Kit	B5506-2
Handle Kits	B5507-1
Inner Frame (Clamp Ring)	B5508-1
Window	B5509-2
Flyscreen	B5510-1
ABS Plastic Trim	B5511-1
Main Seal	B5512-2
Secondary Seal	B5513-2
Fixed Block (Changes Portlights to Fixedlights)	B5514-1
Micro Switch Kit	B5883-B

# **LEWMAR**

## **Portlight and Fixedlight Fitting Instructions**

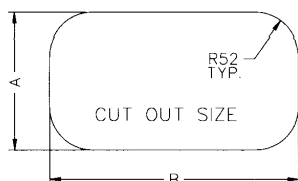
(To be retained in owners manual for future reference)

Lewmar Portlights and Fixedlights are for use on all craft types in accordance with **ISO/DIS 12216.2(E), DESIGN CAT. "A", AREAS II, III and IV**. Modification of the product will invalidate the compliance with this standard.

### **Fitting Instructions**

Lewmar Portlight and Fixedlights should be fitted to a flat surface with a maximum tolerance of +/-1mm extending 12mm beyond the planned cutout and a deck / hull thickness of 6-34mm. Hold the inner frame on the inside of the intended position, ensure that a flat bearing area exists over the surface of the inner frame, leaving sufficient clearance for the trim to be fitted, (see sketch of typical cross section).

With a pencil mark out the cutout to the recommended dimension shown.



Size No.	Product Size	Dim A		Dim B	
		mm	ins	mm	ins
0	4x10	156	6 $\frac{1}{8}$	303	12
1	5x12	171	6 $\frac{7}{8}$	347	13 $\frac{3}{4}$
2	4x14	156	6 $\frac{1}{8}$	405	16
3	5x15	171	6 $\frac{7}{8}$	429	16 $\frac{3}{4}$
4	5x23	171	6 $\frac{7}{8}$	627	24 $\frac{1}{2}$
5	7x15	244	9 $\frac{5}{8}$	429	16 $\frac{3}{4}$
6	3x15	126	5	429	16 $\frac{3}{4}$

***It is essential that the outer frame is placed squarely on the deck opening. When fitting a number of portlights it is advisable to prepare a template.***

Cut out deck along pencil line using a suitable saw.

Where the deck is of composite construction, it is recommended that the exposed laminate be sealed with the appropriate material prior to fitting the product. Openings cut in metal decks should have all burrs and sharp edges removed.

***Portlights and Fixedlights should not be considered as stiffening members and it is recommended that the deck be adequately stiffened to prevent distortion during heavy weather.***

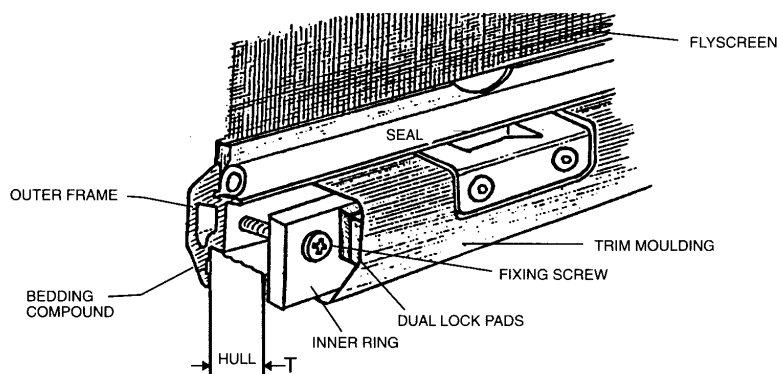
Measure thickness of skin (and inner trim if fitted).

Re-check the frame on aperture and then apply bedding compound to the channel in outer frame. Bedding compound must have good adhesive qualities (eg. silicone sealant), be a suitable grade for marine sealing applications, of 3mm minimum thickness and compressible to allow the outer frame to be pulled down in contact with the deck by the securing screws.

Position the outer frame unit, and with the inner frame joint on the lower edge, bolt firmly in place, working from the centre out to the ends up to a maximum torque of 2.8Nm (25 in.lb). Clean off surplus sealant.

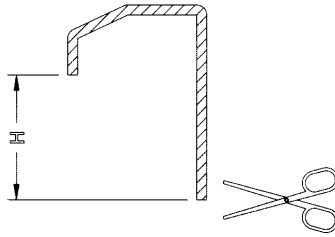
***Caution:***

***M5 screws supplied are for skin thickness 15-19mm. It is important that you use the correct length of screw otherwise you will damage the product. Check skin thickness and select correct length of screw from table.***



**Typical installation cross section**  
**Portlight shown**

Please Turn Over



**Trim cross section**

Adjust the trim moulding to the calculated length H by cutting the inner edge only to suit, using a fine toothed saw or tin snips, such that when fitted the trim fixes to the dual lock pads. Snap the trim moulding into final position making sure that it picks up with the dual lock pads and is fully home all around its perimeter. It is a simple matter to remove the trim by prising it away on the outside edge, refit by snapping back onto the dual lock pads. On craft with considerable curvature or difficult inner trim, it may be necessary to use more dual lock pads which are available as a spares kit. Alternatively, in extreme cases, it may be necessary to use screw fixings through the trim into the inner frame.

For portlight installations, check for correct operation of the window, closing / locking operation, even pressure on the seal etc. Don't forget to leave the flyscreen on board.

Dimension T	Screw	Order No.	Dimension H
6 – 10mm	use M5x16	19899100	H = T – 12mm  Where: H = Trim length T = boat moulding measurement
11 – 14mm	use M5x20	19899200	
15 – 19mm	use M5x25	19899300	
20 – 24mm	use M5x30	19899400	
25 – 29mm	use M5x35	19899500	
30 – 34mm	use M5x40	19899600	

**Alternative screw length table**

**User Notes**

Flyscreens, when fitted are located between the outer frame and seal, enabling the portlight to be closed with the flyscreen in place. See the separate sheet for detailed instructions.

If a deadlight is required, we suggest that a plywood, aluminium or fibreglass plate be made to cover the portlight (notched to clear the hinges and handles on opening versions). The portlight trim moulding can then be removed allowing the inner frame to be drilled and tapped to facilitate bolting the deadlight in position.

Always wash the Portlight or Fixedlight with soap, water and a soft cloth.

***Never use abrasive or solvent cleaners on the window, as this may at a later date damage the acrylic.***

## **LEWMAR**

### **Ocean Portlight and Fixedlight Fitting Instructions**

(To be retained in owners manual for future reference)

Lewmar Ocean Portlights and Fixedlights are for use on all craft types in accordance with **ISO/DIS 12216.2(E)**, **DESIGN CAT. "A", AREAS I, II, III and IV**. Modification of the product will invalidate the compliance with this standard.

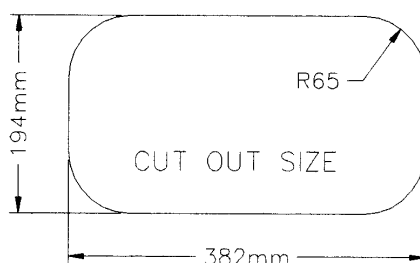
#### **Fitting Instructions**

Lewmar Portlight and Fixedlights should be fitted to a flat surface with a maximum tolerance of +/-1mm extending 20mm beyond the planned cutout and a deck / hull thickness of 12-36mm. Hold the inner frame on the inside of the intended position, ensure that a flat bearing area exists over the surface of the inner frame, leaving sufficient clearance for the trim to be fitted, (see sketch of typical cross section).

With a pencil mark out the cutout to the recommended dimensions shown.

*The lower edge of product fitted in the hull AREA I should be a minimum of 600mm above the floatation plane in the crafts fully loaded ready-for-use condition, the boat being at rest in the upright condition.*

*Where craft intended to be operated on 'OCEAN' or 'OFFSHORE' voyages (as defined by ISO/DIS 12216.2(E)), no part of the plate or its framing is to extend beyond the outer surface of the hull or of a built-in-fairing being an integral part of the hull.*



*It is essential that the outer frame is placed squarely on the deck opening.*

*When fitting a number of portlights it is advisable to prepare a template.*

Cut out deck along pencil line using a suitable saw.

Where the deck is of composite construction, it is recommended that the exposed laminate be sealed with the appropriate material prior to fitting the product. Openings cut in metal decks should have all burrs and sharp edges removed.

*Portlights and Fixedlights should not be considered as stiffening members and it is recommended that the deck be adequately stiffened to prevent distortion during heavy weather.*

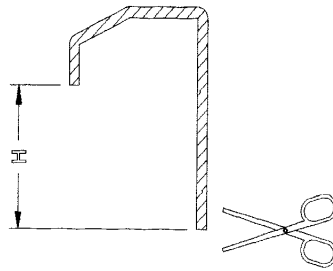
Measure thickness of skin (and inner trim if fitted).

Re-check the frame on aperture and then apply bedding compound to the channel in outer frame. Bedding compound must have good adhesive qualities (eg. silicone sealant), be a suitable grade for marine sealing applications, of 3mm minimum thickness and compressible to allow the outer frame to be pulled down in contact with the deck by the securing screws.

Position the outer frame unit, and with the inner frame joint on the lower edge, bolt firmly in place, working from the centre out to the ends up to a maximum torque of 2.8Nm (25 in.lb). Clean off surplus sealant.

**Caution:**

*M5 screws supplied are for skin thickness 12-16mm. It is important that you use the correct length of screw otherwise you will damage the product. Check skin thickness and select correct length of screw from table.*



**Trim cross section**

Adjust the trim moulding to the required length H by cutting the inner edge only to suit, using a fine toothed saw or tin snips, such that when fitted the trim fixes to the dual lock pads. Snap the trim moulding into final position making sure that it picks up with the dual lock pads and is fully home all around its perimeter. It is a simple matter to remove the trim by prising it away on the outside edge, refit by snapping back onto the dual lock pads. On craft with considerable curvature or difficult inner trim, it may be necessary to use more dual lock pads which are available as a spares kit.

For portlight installations, check for correct operation of the window, closing / locking operation, even pressure on the seal etc. Don't forget to leave the flyscreen on board.

Dimension T	Screw	Order No.
12 – 16mm	use M5x16	19899100
17 – 20mm	use M5x20	19899200
21 – 25mm	use M5x25	19899300
26 – 30mm	use M5x30	19899400
31 – 35mm	use M5x30	19899500
36 – 38mm	use M5x30	19899600

**Alternative screw length table**

### **User Notes**

Flyscreens, when fitted are snapped into position on the outer frame, enabling the portlight to be closed with the flyscreen in place.

Always wash the Portlight or Fixedlight with soap, water and a soft cloth.

***Never use abrasive or solvent cleaners on the window, as this may at a later date damage the acrylic.***

***A deadlight is available for this product, catalogue number 360053919. Store the deadlight in an easily accessible position close to the portlight. Check the fitting of the deadlight regularly.***

## **LEWMAR**

### **Atlantic Portlight and Fixedlight Fitting Instructions**

(To be retained in owners manual for future reference)

Lewmar Atlantic Portlights and Fixedlights are for use on all types of craft in accordance with the following standard:

**ISO/DIS 12216.2(E), DESIGN CAT. "A", AREAS I, II, III and IV....**Portlights sizes 10,30 & 32 and all Fixedlights.

**ISO/DIS 12216.2(E), DESIGN CAT. "A", AREAS II, III and IV.....**All other sizes of Portlight.

Modification of the product will invalidate the compliance with the standard.

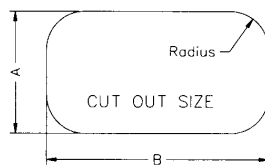
#### **Fitting Instructions**

Lewmar Portlight and Fixedlights should be fitted to a flat surface with a maximum tolerance of +/-1mm extending 12mm beyond the planned cutout and a deck / hull thickness of 8-24mm (portlight) or 8-35mm (fixedlight). Hold the inner frame on the inside of the intended position, ensure that a flat bearing area exists over the surface of the inner frame.

With a pencil mark out the cutout to the recommended dimension shown.

**The lower edge of product fitted in the hull AREA I should be a minimum of 600mm above the floatation plane in the crafts fully loaded ready-for-use condition, the boat being at rest in the upright condition.**

**Where craft intended to be operated on 'OCEAN' or 'OFFSHORE' voyages (as defined by ISO/DIS 12216.2(E)), no part of the plate or its framing is to extend beyond the outer surface of the hull or of a built-in-fairing being an integral part of the hull.**



Size No.	Dim A		Dim B		Radius	
	mm	ins	mm	ins	mm	ins
10	154	6 <sup>1</sup> / <sub>8</sub>	284	11 <sup>3</sup> / <sub>8</sub>	61	2 <sup>3</sup> / <sub>8</sub>
30	180	7 <sup>1</sup> / <sub>8</sub>	380	14 <sup>1</sup> / <sub>8</sub>	61	2 <sup>3</sup> / <sub>8</sub>
32	180	7 <sup>1</sup> / <sub>8</sub>	380	14 <sup>1</sup> / <sub>8</sub>	90	3 <sup>1</sup> / <sub>2</sub>
40	180	7 <sup>1</sup> / <sub>8</sub>	460	18 <sup>1</sup> / <sub>8</sub>	61	2 <sup>3</sup> / <sub>8</sub>
52	221	8 <sup>1</sup> / <sub>8</sub>	539	21 <sup>1</sup> / <sub>4</sub>	61	2 <sup>3</sup> / <sub>8</sub>
60	180	7 <sup>1</sup> / <sub>8</sub>	580	22 <sup>1</sup> / <sub>8</sub>	61	2 <sup>3</sup> / <sub>8</sub>
64	180	7 <sup>1</sup> / <sub>8</sub>	630	24 <sup>1</sup> / <sub>8</sub>	61	2 <sup>3</sup> / <sub>8</sub>

**It is essential that the outer frame is placed squarely on the opening.**

**When fitting a number of portlights it is advisable to prepare a template.**

Cut out deck along pencil line using a suitable saw.

Where the deck is of composite construction, it is recommended that the exposed laminate be sealed with the appropriate material prior to fitting the product. Openings cut in metal decks should have all burrs and sharp edges removed.

**Portlights and Fixedlights should not be considered as stiffening members and it is recommended that the deck be adequately stiffened to prevent distortion during heavy weather.**

Measure thickness of skin (and inner trim if fitted).

Re-check the frame on aperture and then apply bedding compound to the channel in outer frame. Bedding compound must have good adhesive qualities (eg. silicone sealant), be a suitable grade for marine sealing applications, of 3mm minimum thickness and compressible to allow the outer frame to be pulled down in contact with the deck by the securing screws.

Position the outer frame unit, and with the inner frame joint on the lower edge, bolt firmly in place, working from the centre out to the ends up to a maximum torque of 2.8Nm (25 in.lb). Clean off surplus sealant.

**Caution:**

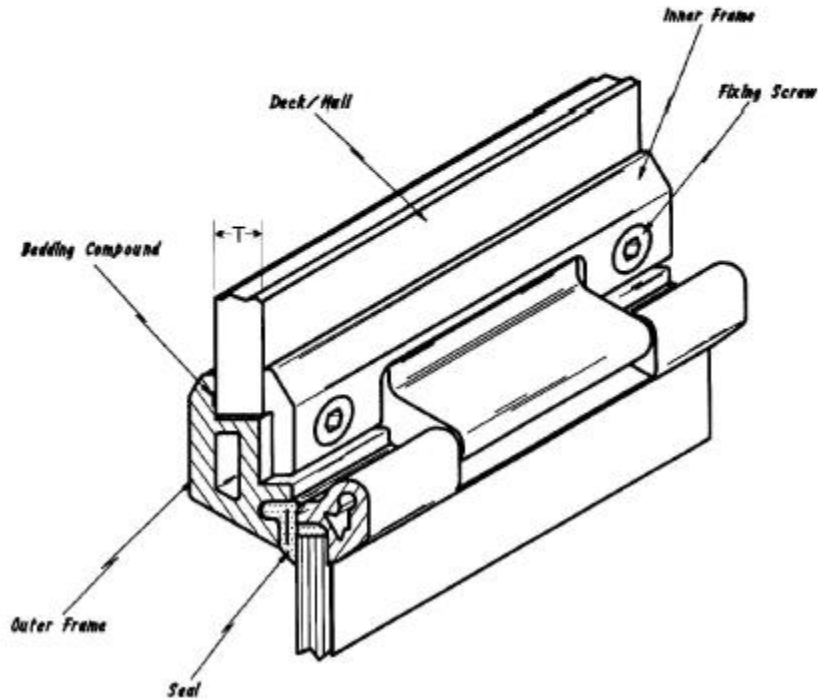
**M5 screws supplied are for skin thickness 8-10mm. It is important that you use the correct length of screw otherwise you will damage the product. Check skin thickness and select correct length of screw from table.**

Dimension T	Screw	Order No.
8 – 10mm	use M5x16	360360999
11 – 15mm	use M5x20	360361999
16 – 19mm	use M5x25	360362999
20 – 24mm	use M5x30	360363999

#### **Alternative screw length table**

Please Turn Over

For portlight installations, check for correct operation of the window, closing / locking operation, even pressure on the seal etc. Don't forget to leave the flyscreen on board.



### **Typical installation cross section**

Portlight shown

### **User Notes**

Flyscreens, when fitted are located between the outer frame and seal, enabling the portlight to be closed with the flyscreen in place. See the separate sheet for detailed instructions.

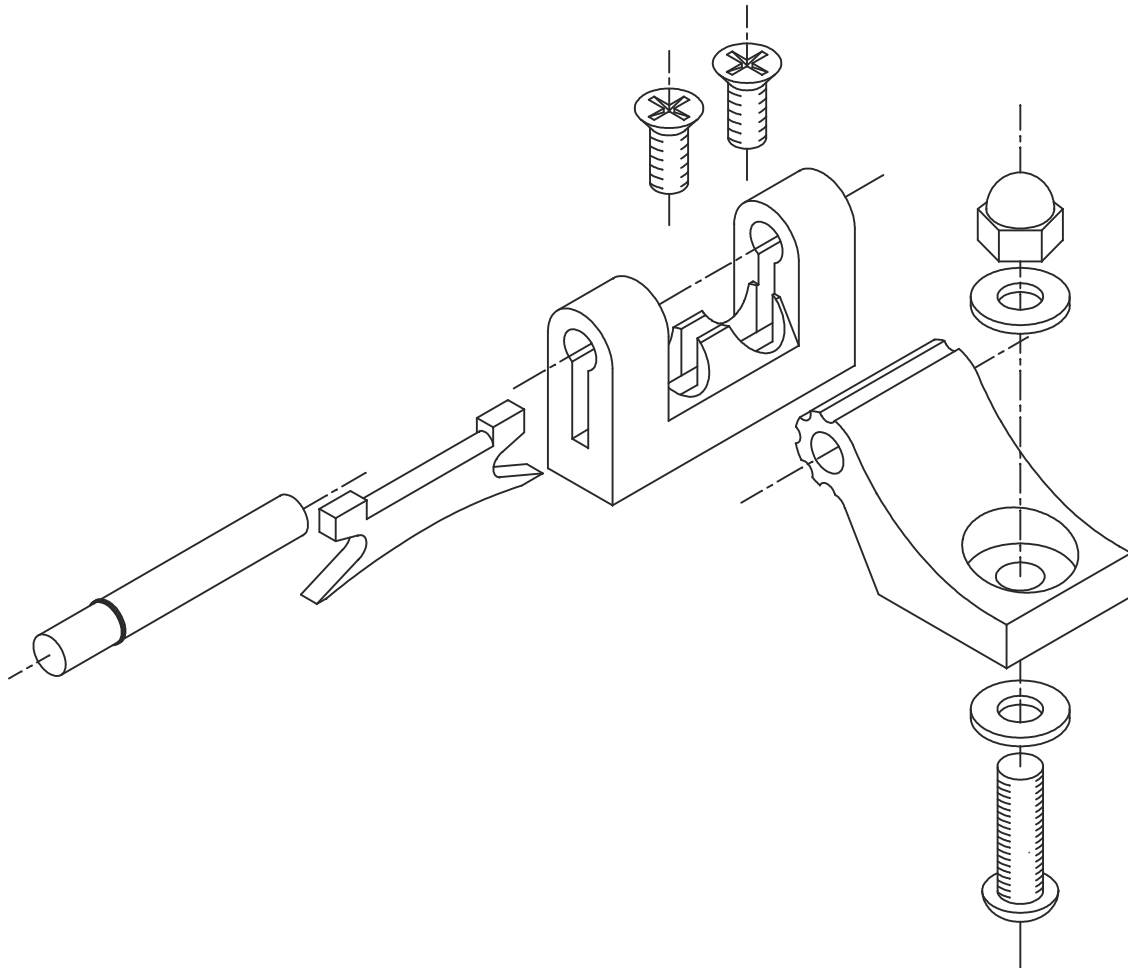
If a deadlight is required, we suggest that a plywood, aluminium or fibreglass plate be made to cover the portlight (notched to clear the hinges and handles on opening versions). The portlight trim moulding can then be removed allowing the inner frame to be drilled and tapped to facilitate bolting the deadlight in position.

Always wash the Portlight or Fixedlight with soap, water and a soft cloth.

**Never use abrasive or solvent cleaners on the window, as this may at a later date damage the acrylic.**

Please Turn Over

# LEWMAR



KIT No.	36000199Z
---------	-----------

Z = 1 FOR STANDARD GREY AND 1 FOR BENETEAU GREY

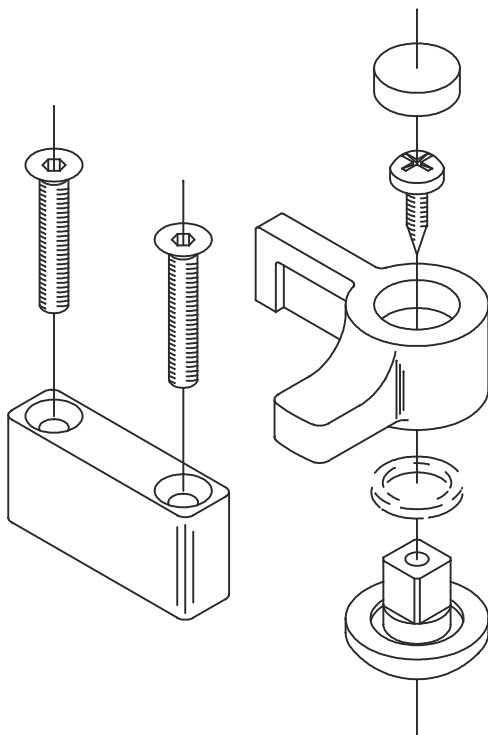
## PORTLIGHT SPARE PARTS

HINGE KITS

ISSUE 1.1

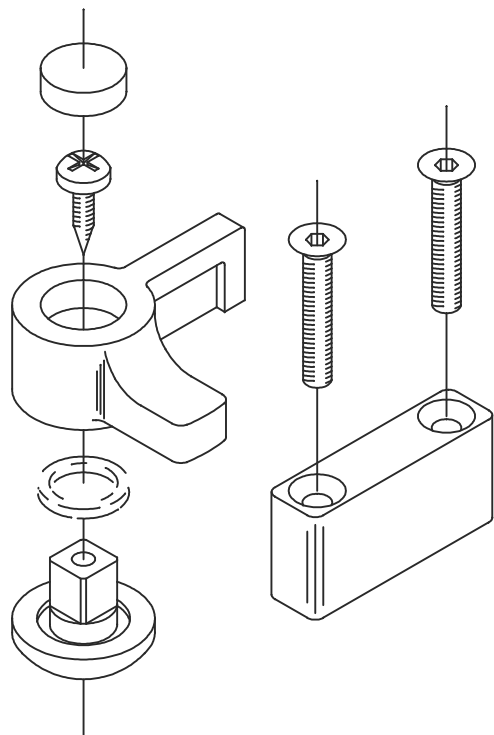
DATE 15.4.92

# LEWMAR



KIT No.	36000399Z
---------	-----------

L.H. HANDLE KIT



KIT No.	36000299Z
---------	-----------

R.H. HANDLE KIT

Z = 0 FOR STANDARD GREY AND 1 FOR BENETEAU GREY

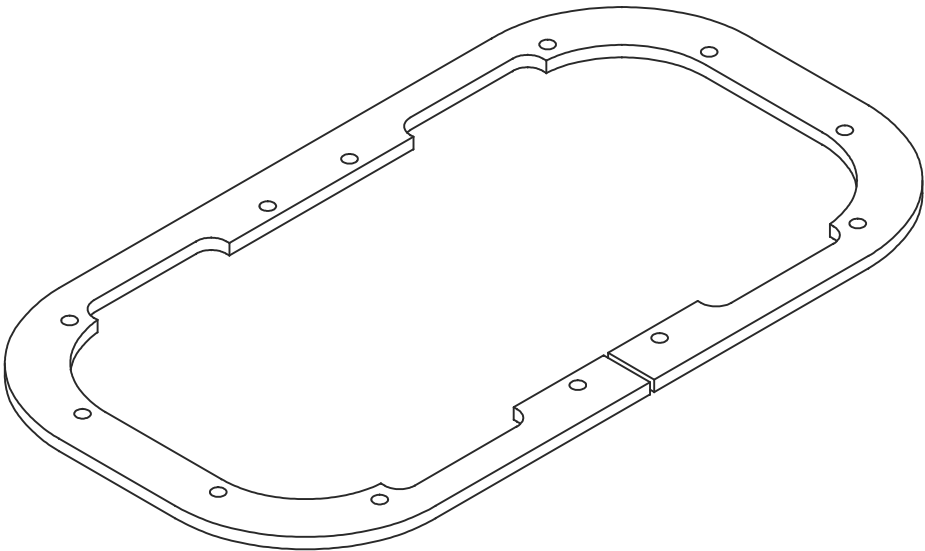
## PORTLIGHT SPARE PARTS

HANDLE KITS

ISSUE 1.2

DATE 31.7.96

# LEWMAR



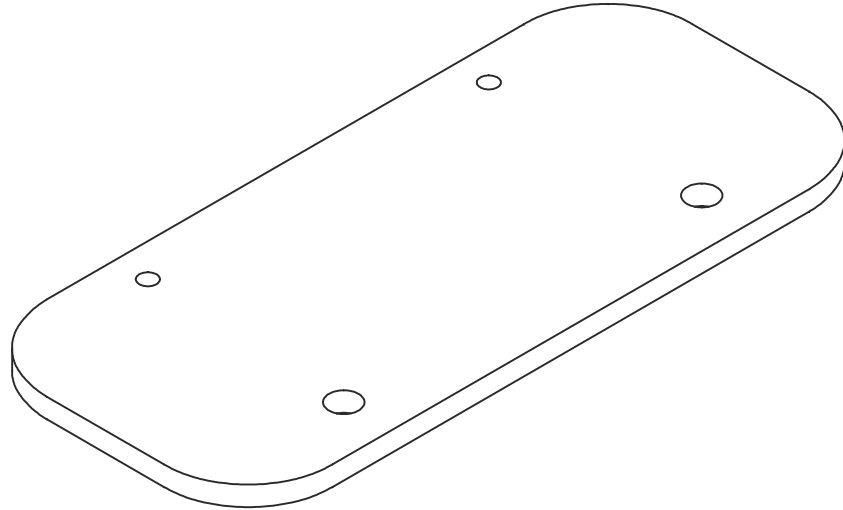
SPARES No.	PORTLIGHT
360004999	SIZE 0 (4x10)
360005999	SIZE 1 (5x12)
360006999	SIZE 2 (4x14)
360007999	SIZE 3 (5x15)
360008999	SIZE 4 (5x23)
360009999	SIZE 4R & 4L
360014999	SIZE 5 (7x15)
360013999	SIZE 6 (3x15)

## PORTLIGHT SPARE PARTS

INNER FRAMES	ISSUE 1.3	DATE 29.4.98
--------------	-----------	--------------

# LEWMAR

B5504-3



SPARES No.	SIZE
360015X99	0 (4x10)
360016X99	1 (5x12)
360017X99	2 (4x14)
360018X99	3 (5x15)
360019X99	4 (5x23)
360244X99	4R
360246X99	4L
360021X99	5 (7x15)
360020X99	6 (3x15)

X DIGIT	ACRYLIC COLOUR
0	SMOKE GREY
1	BRONZE
2	CLEAR
3	WHITE
4	GREEN

## PORTLIGHT SPARE PARTS

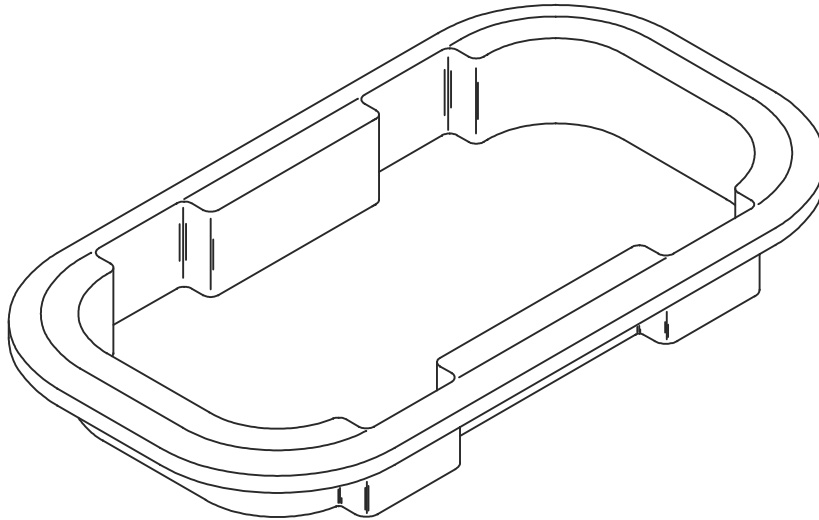
ACRYLICS

ISSUE 1.2

DATE 23-MAY-00

# LEWMAR

B5505-3



SPARES No.	SIZE
368802W39	0 (4x10)
368812W39	1 (5x12)
368822W39	2 (4x14)
368832W39	3 (5x15)
368842W39	4 (5x23)
368844W39	4RH
368846W39	4LH
368852W39	5

ALL TRIMS COME WITH DUAL LOCK FOR HOLDING TRIMS IN PLACE

A KIT OF 8 DUAL LOCKS IS ALSO AVAILABLE ON P/N 19899900

W = 2 FOR WHITE AND 5 FOR IVORY

## PORTLIGHT SPARE PARTS

TRIM MOULDINGS

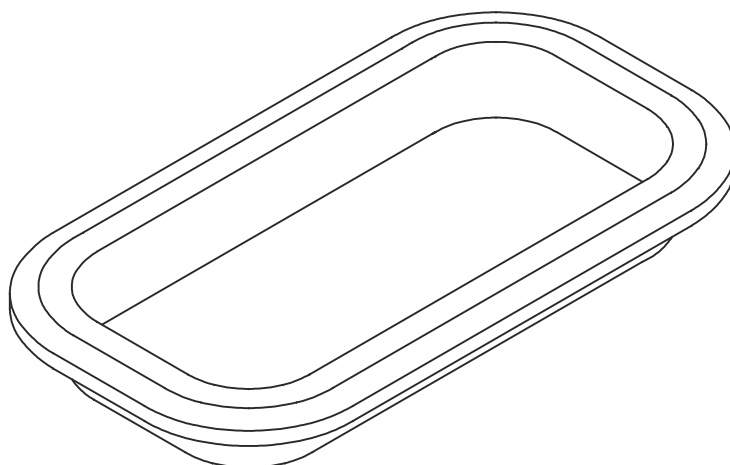
ISSUE

1.4

DATE

02-DEC-99

# LEWMAR



SPARES No.	SIZE
368801W39	0 (4x10)
368811W39	1 (5x12)
368821W39	2 (4x14)
368831W39	3 (5x15)
368841W39	4 (5x23)
368843W39	4RH
368845W39	4LH

ALL TRIMS COME WITH DUAL LOCK FOR  
HOLDING TRIMS IN PLACE

A KIT OF 8 DUAL LOCKS IS ALSO  
AVAILABLE ON P/N 19899900

W = 2 FOR WHITE AND 5 FOR IVORY

## FIXEDLIGHT SPARE PARTS

TRIM MOULDINGS

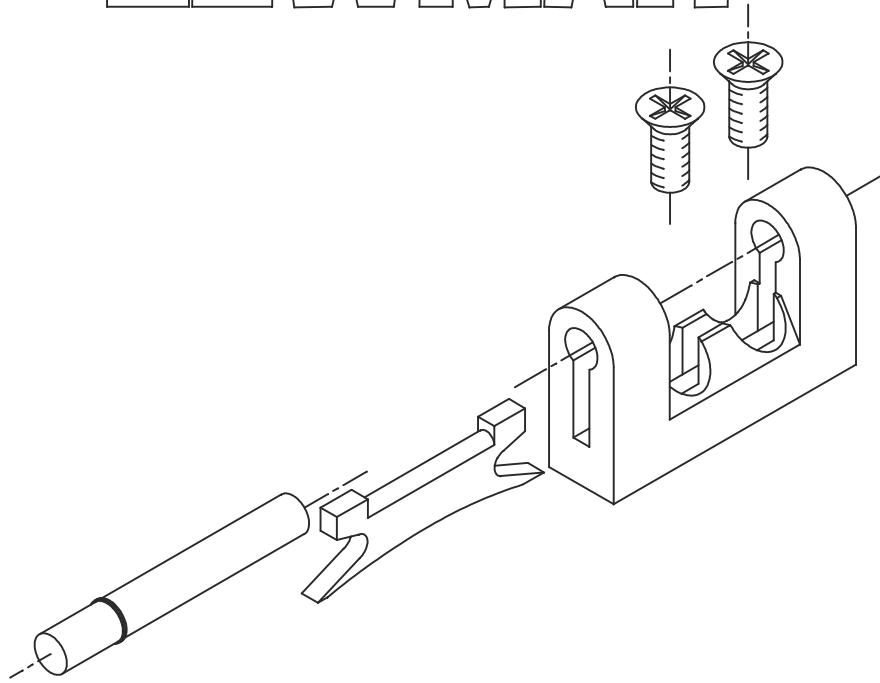
ISSUE

1.4

DATE

02-DEC-99

# LEWMAR



KIT No.	36004099Z
---------	-----------

Z = 0 FOR STANDARD GREY

## OCEAN PORTLIGHT SPARE PARTS

HINGE KITS

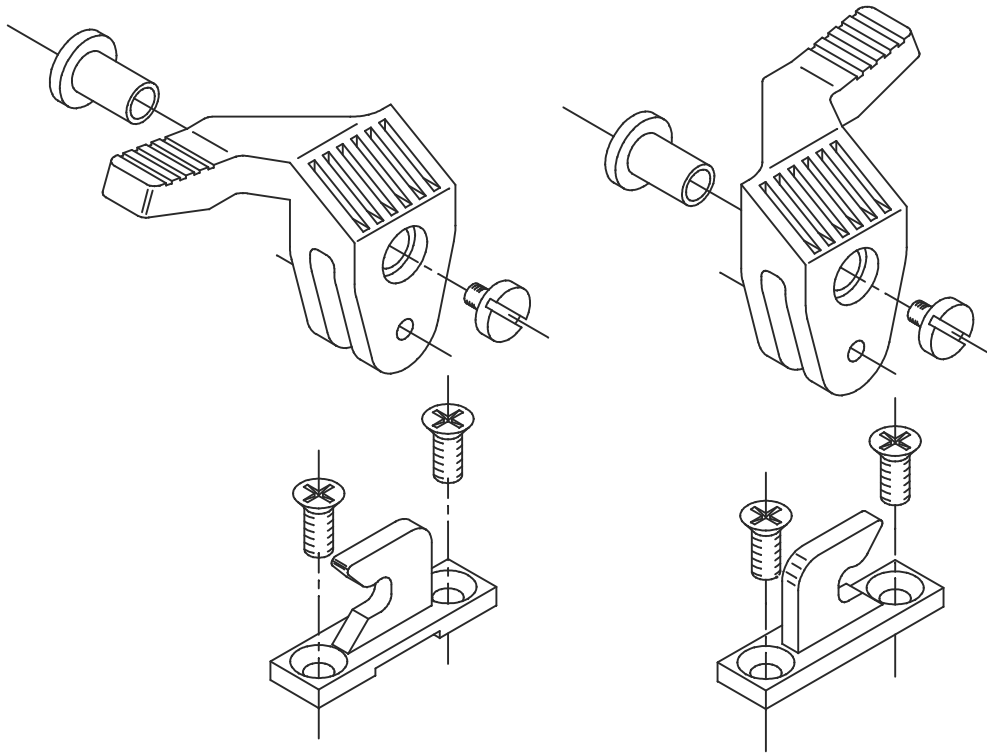
ISSUE

1.3

DATE

21.4.98

# LEWMAR



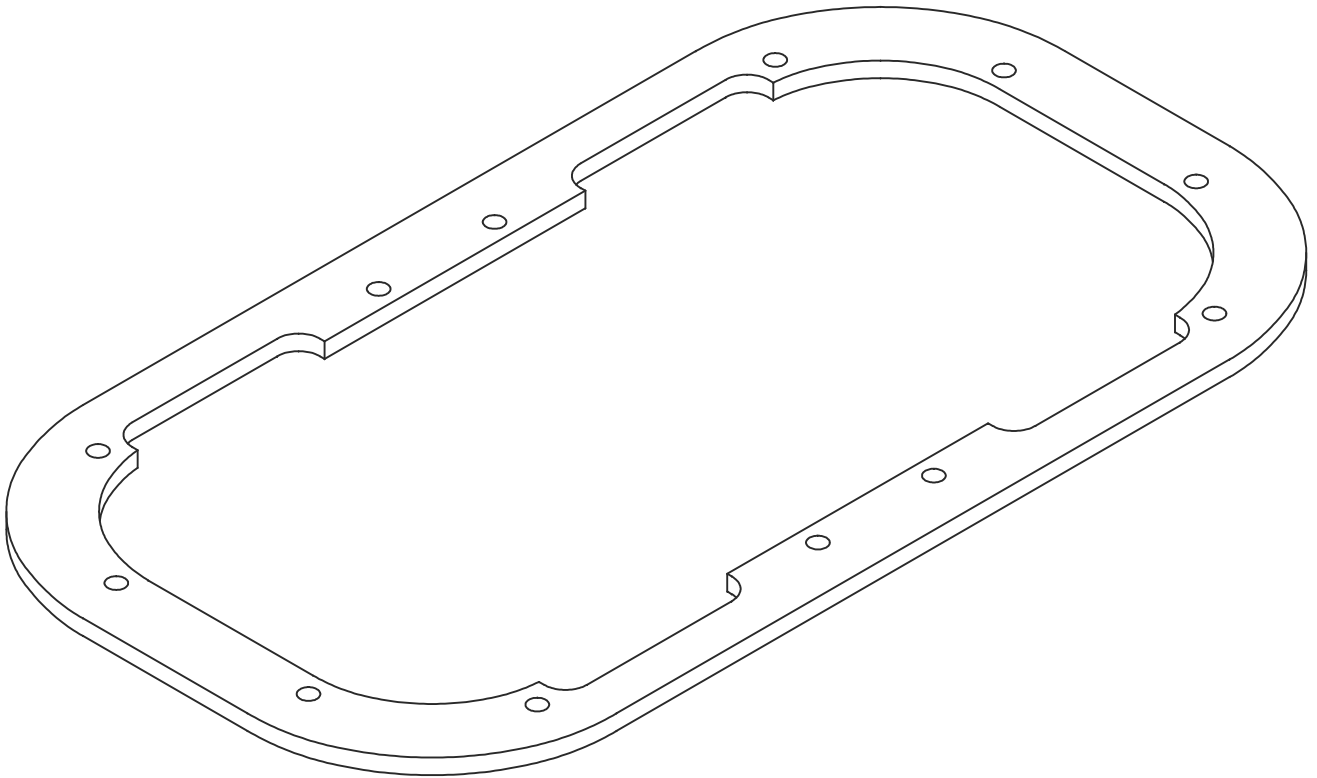
KIT No.	36004199Z
---------	-----------

Z = 0 FOR STANDARD GREY AND 1 FOR BENETEAU GREY

## OCEAN PORTLIGHT SPARE PARTS

HANDLE KITS	ISSUE 1.1	DATE 23.4.92
-------------	-----------	--------------

# LEWMAR



SPARES No.	PORTLIGHT
360042909	SIZE 1 (5x12)

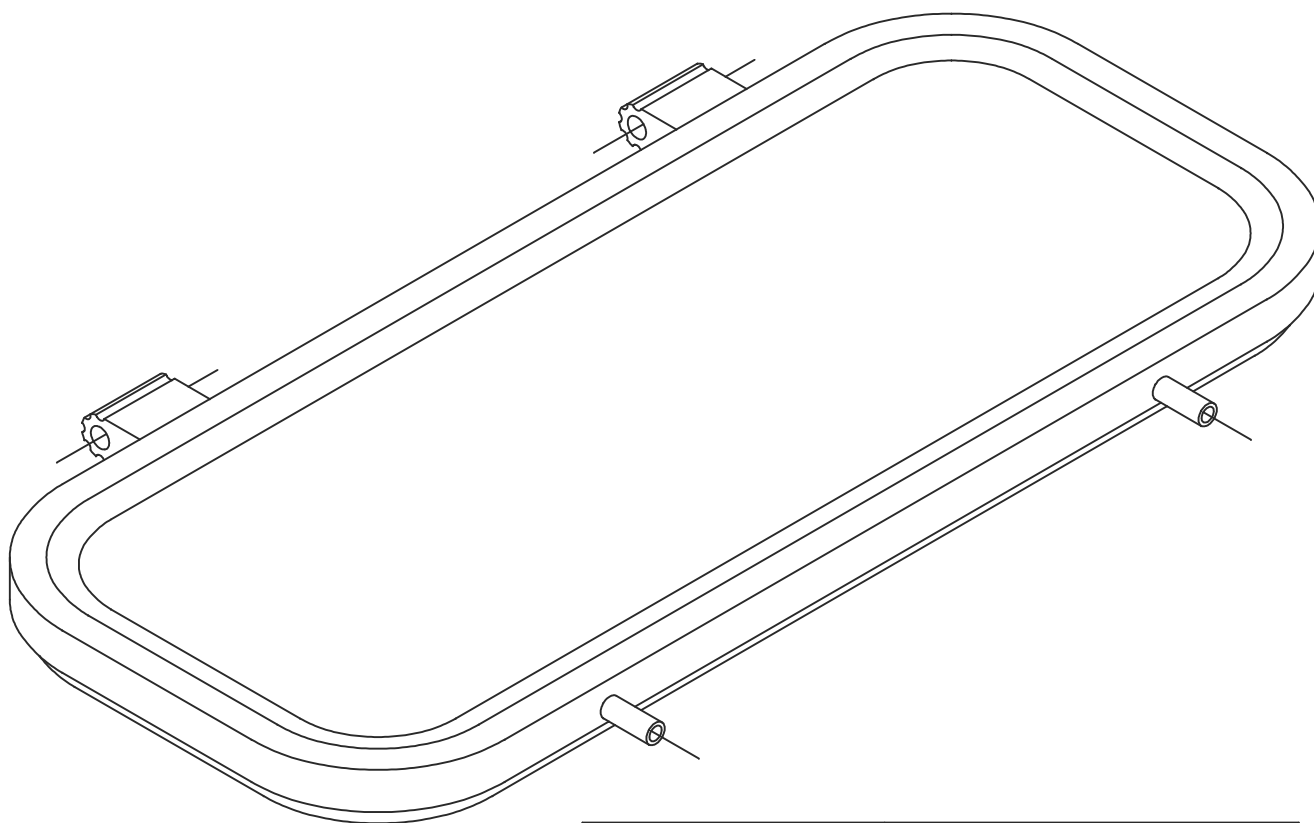
## OCEAN PORTLIGHT SPARE PARTS

INNER FRAMES

ISSUE 1.1

DATE 24.4.92

# LEWMAR



KIT No.	360044XY9
---------	-----------

X DIGIT	ACRYLIC COLOUR
0	SMOKE GREY
1	BRONZE
2	CLEAR
3	WHITE
4	GREEN

Y DIGIT	FRAME COLOUR
0	SILVER ANODISE
1	BLACK ANODISE
2	WHITE PAINT
8	SHINY SILVER

SOME HIGH VOLUME BUILDERS USE  
CUSTOM PAINT COLOURS NOT SHOWN HERE

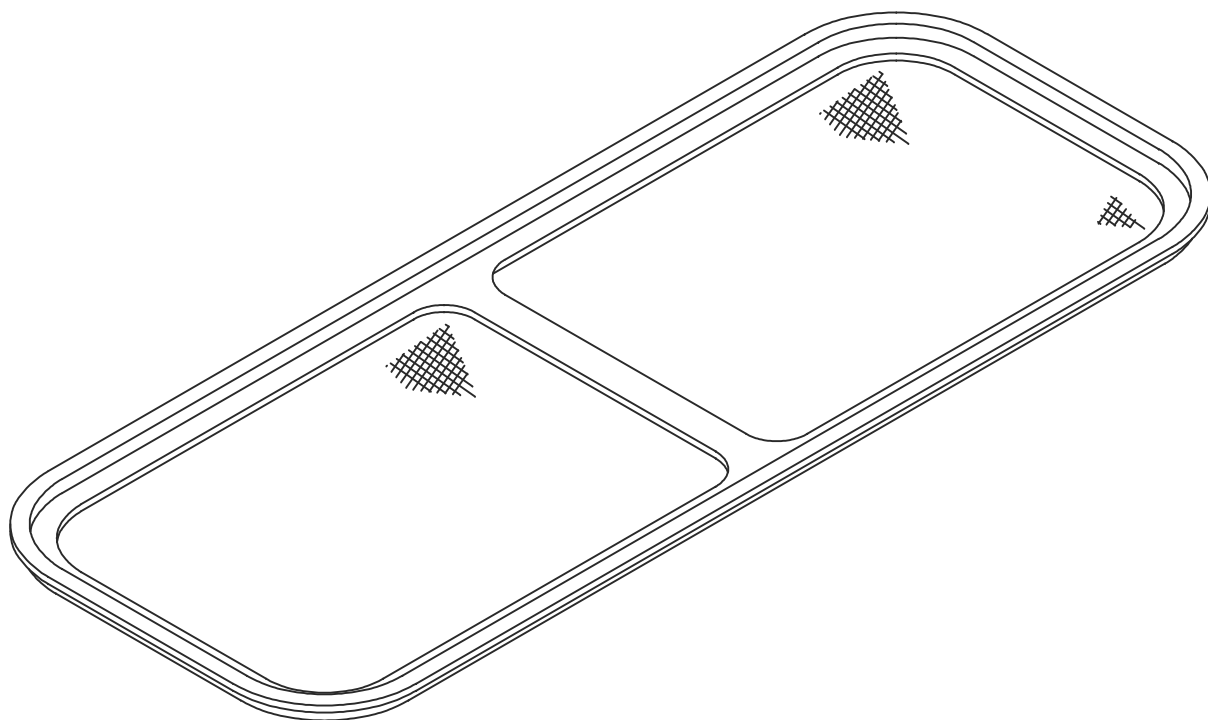
## OCEAN PORTLIGHT SPARE PARTS

WINDOW

ISSUE 1.2

DATE 24-MAY-00

# LEWMAR



SPARES No.	PORTLIGHT
360046999	SIZE 1 (5x12)

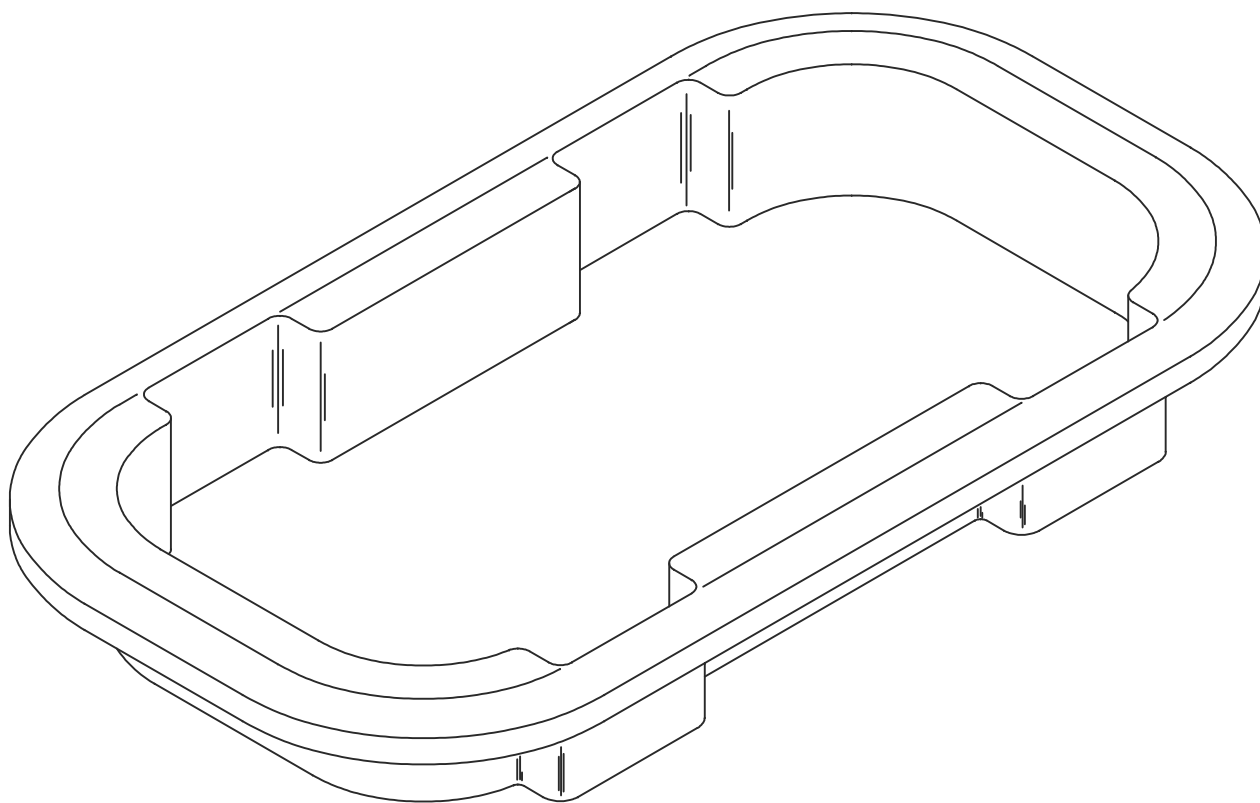
OCEAN PORTLIGHT SPARE PARTS

FLYSCREEN

ISSUE 1.1

DATE 28.4.92

# LEWMAR



KIT No.	3600489W9
---------	-----------

W = 2 FOR WHITE AND 5 FOR IVORY

## OCEAN PORTLIGHT SPARE PARTS

TRIM MOULDING

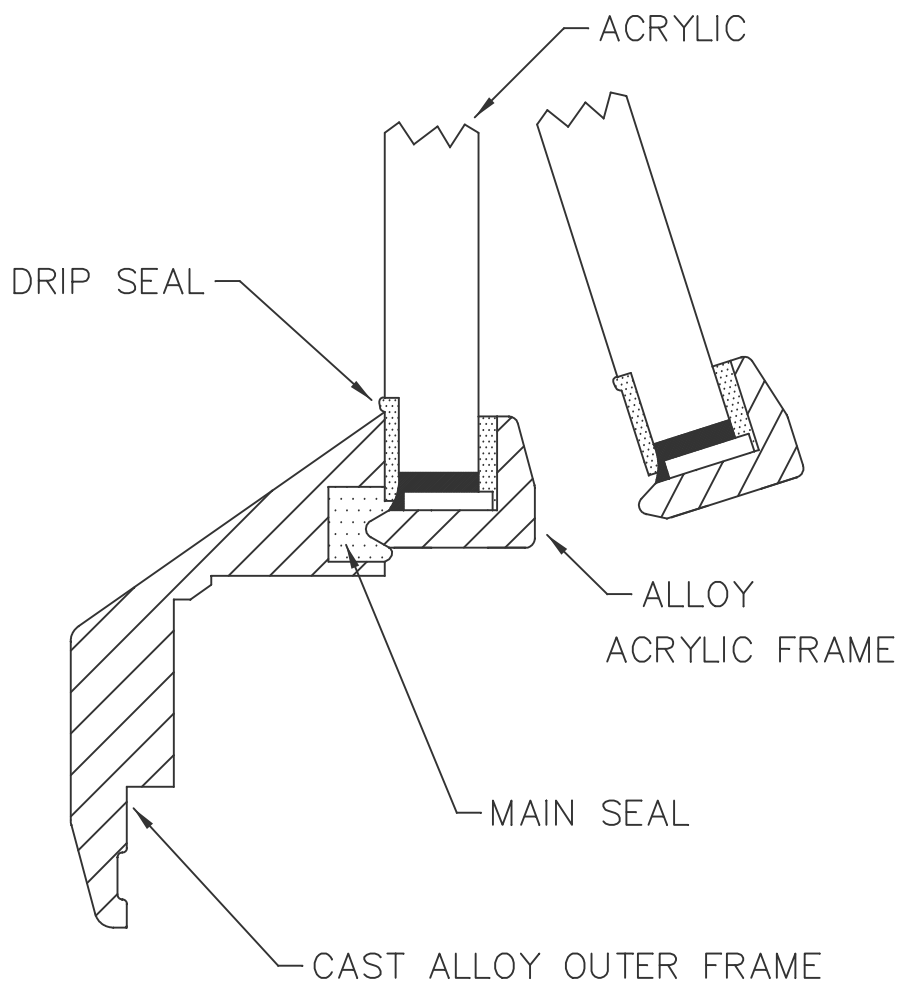
ISSUE

1.2

DATE

16.7.92

# LEWMAR



SPARES No.
360050999

NOTE!  
 AFTER REMOVING THE OLD SEAL AND CLEANING SEAL GROOVE, THE NEW SEAL SHOULD BE FIXED IN PLACE USING A SMALL QUANTITY OF CLEAR SILICONE SEALANT.

## OCEAN PORTLIGHT SPARE PARTS

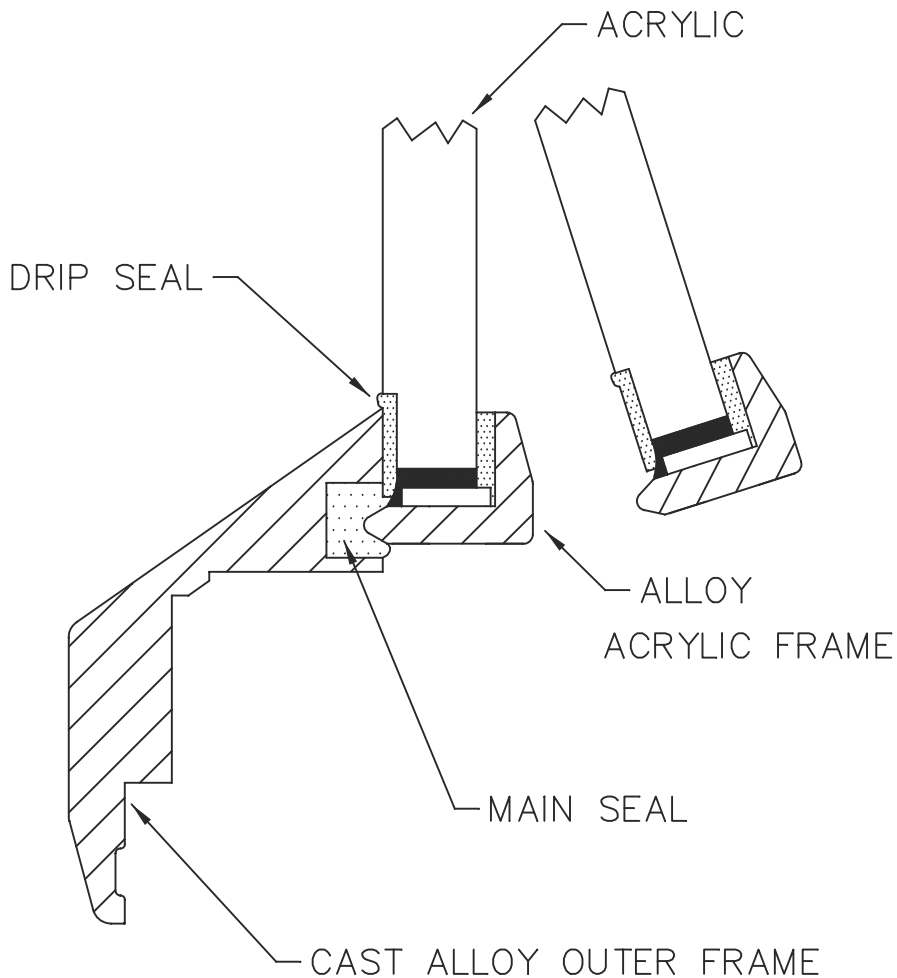
MAIN SEAL

ISSUE 1.2

DATE 24-MAY-00

# LEWMAR

B5513-2



SPARES No.
360051999

**NOTE!**

AFTER REMOVING THE OLD SEAL ENSURE SURFACES ARE CLEAN BEFORE APPLYING THE NEW SELF ADHESIVE SEAL. TRIM TO LENGTH AFTER FITTING.

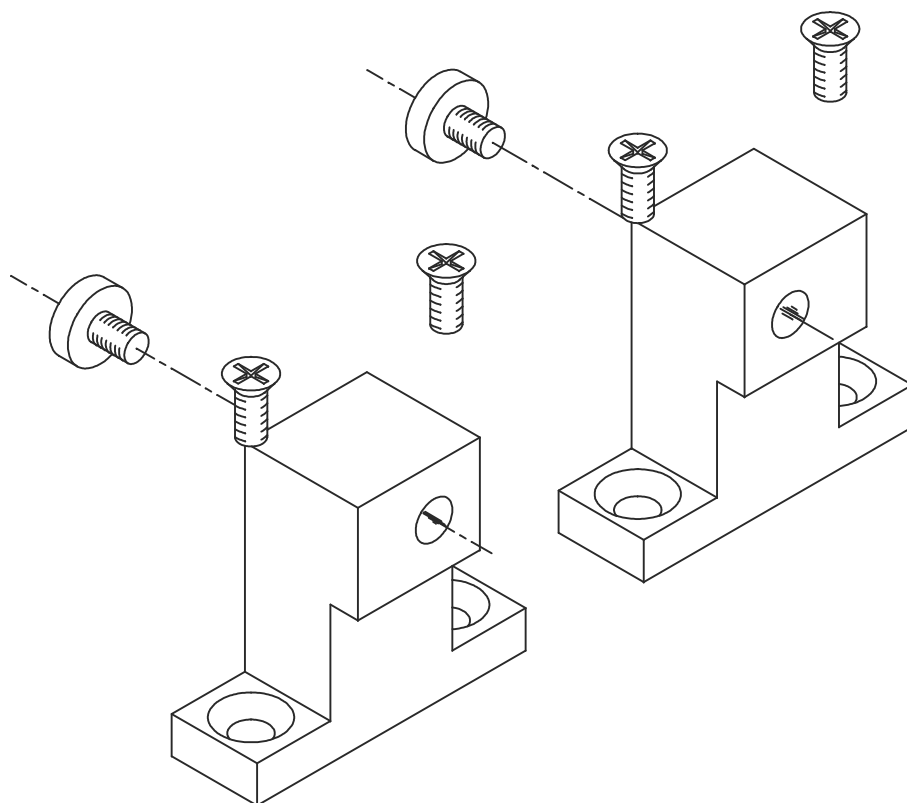
## OCEAN PORTLIGHT SPARE PARTS

DRIP SEAL

ISSUE 1.2

DATE 24-MAY-00

# LEWMAR



SPARES No.

360052990

OCEAN FIXEDLIGHT SPARE PARTS

FIXED BLOCK

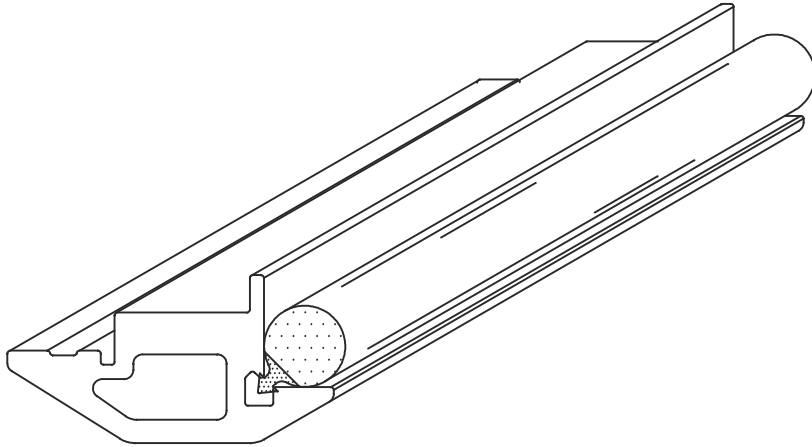
ISSUE

1.1

DATE

14.4.92

# LEWMAR



KIT No.	PORTLIGHT SIZE
19898500	0
19898600	1
19898700	2
19898800	3
19898900	4
360032999	4L/R
360055999	5 (7x15)
360054999	6 (3x15)

## PORTLIGHT SPARE PARTS

REPLACEMENT SEALS

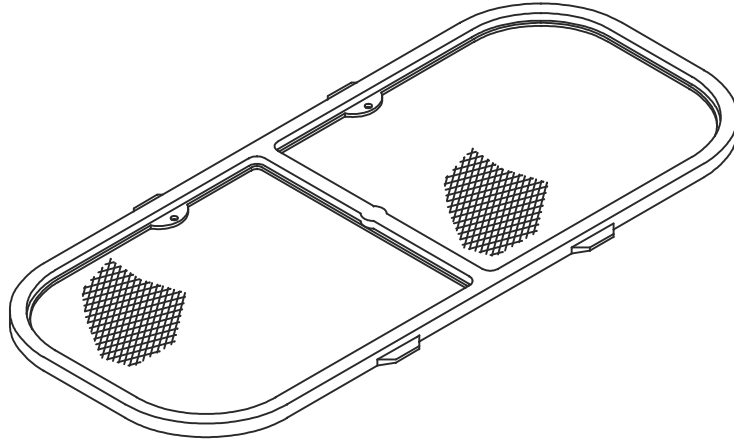
ISSUE

1.3

DATE

12.8.98

# LEWMAR



KIT No.	PORTLIGHT
19898000	SIZE 0 (4 X 10)
19898100	SIZE 1 (5 X 12)
19898200	SIZE 2 (4 X 14)
19898300	SIZE 3 (5 X 15)
19898400	SIZE 4 (5 X 23)
367844916	SIZE 4R
367846916	SIZE 4L
367852916	SIZE 5 (7 X 15)
NONE	SIZE 6 (3 X 15)

THE NEW STANDARD PORTLIGHT FLYSCREENS WORK IN THE STANDARD PORTLIGHTS BUT THE FITTING IS MORE DIFFICULT

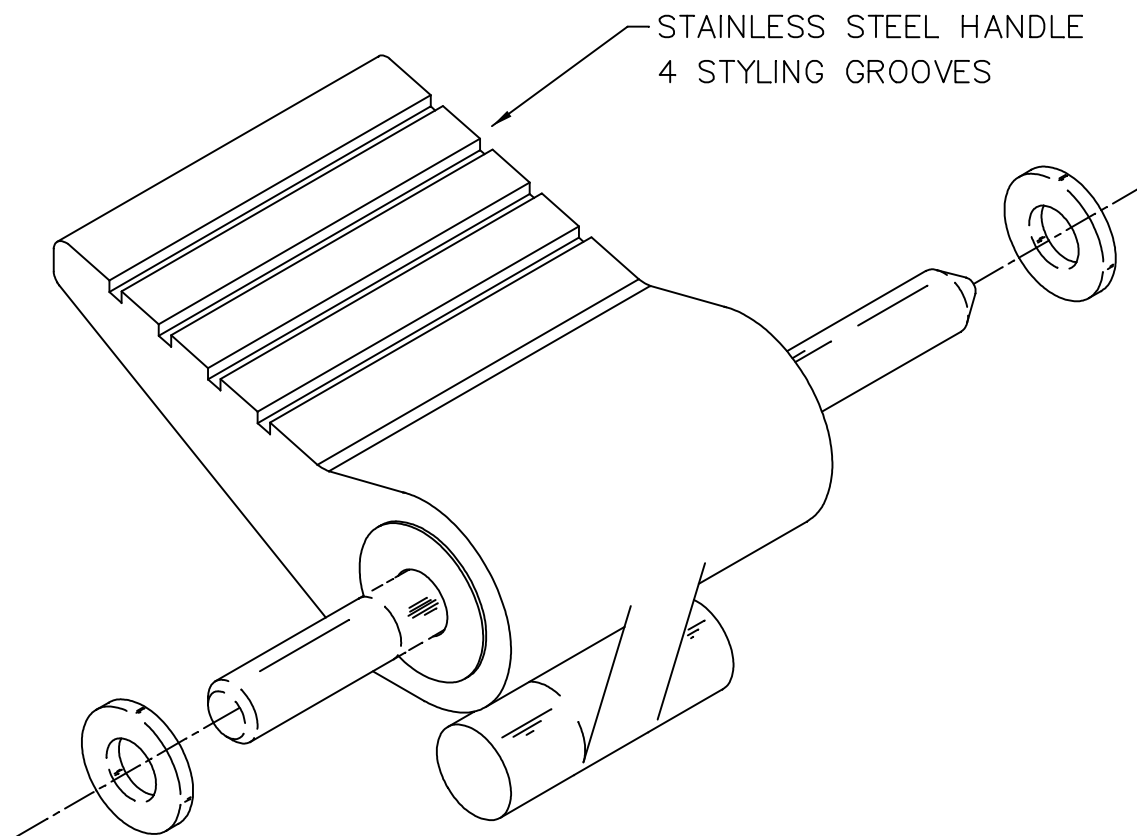
## PORTLIGHT SPARE PARTS

FLYSCREEN

ISSUE 1

DATE 05-05-98

# LEWMAR



KIT No.	360520999
---------	-----------

Mk.2 HANDLES ARE PLASTIC OR  
STAINLESS STEEL AND HAVE 3 GROOVES

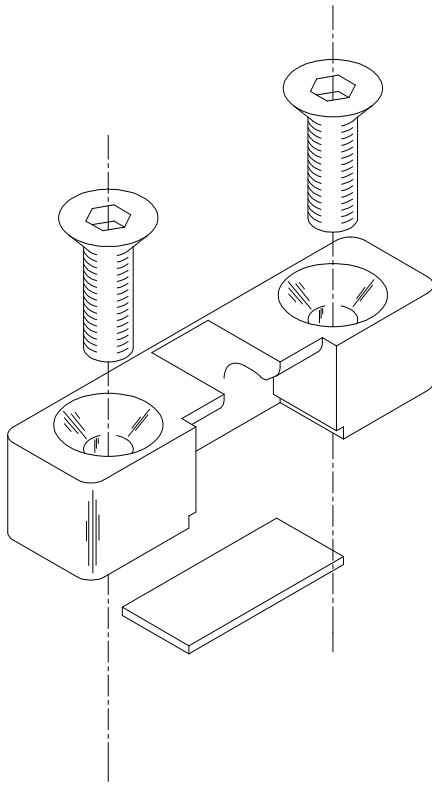
ATLANTIC Mk.1 PORTLIGHT SPARE PARTS

HANDLE KITS	ISSUE 1.1	DATE 02-JUN-00
-------------	-----------	----------------

# LEWMAR

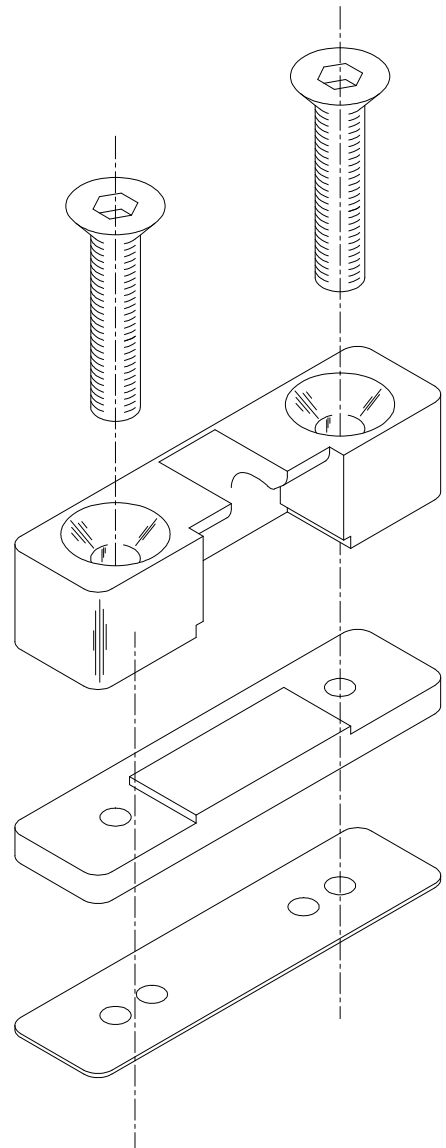
Mk.1

M5 X 20 SCREWS



Mk.2

M5 X 25 SCREWS



KIT No.	361026999
---------	-----------

KIT CONTAINES PARTS FOR Mk.1 AND Mk.2

ATLANTIC PORTLIGHT SPARE PARTS

CATCH BLOCK

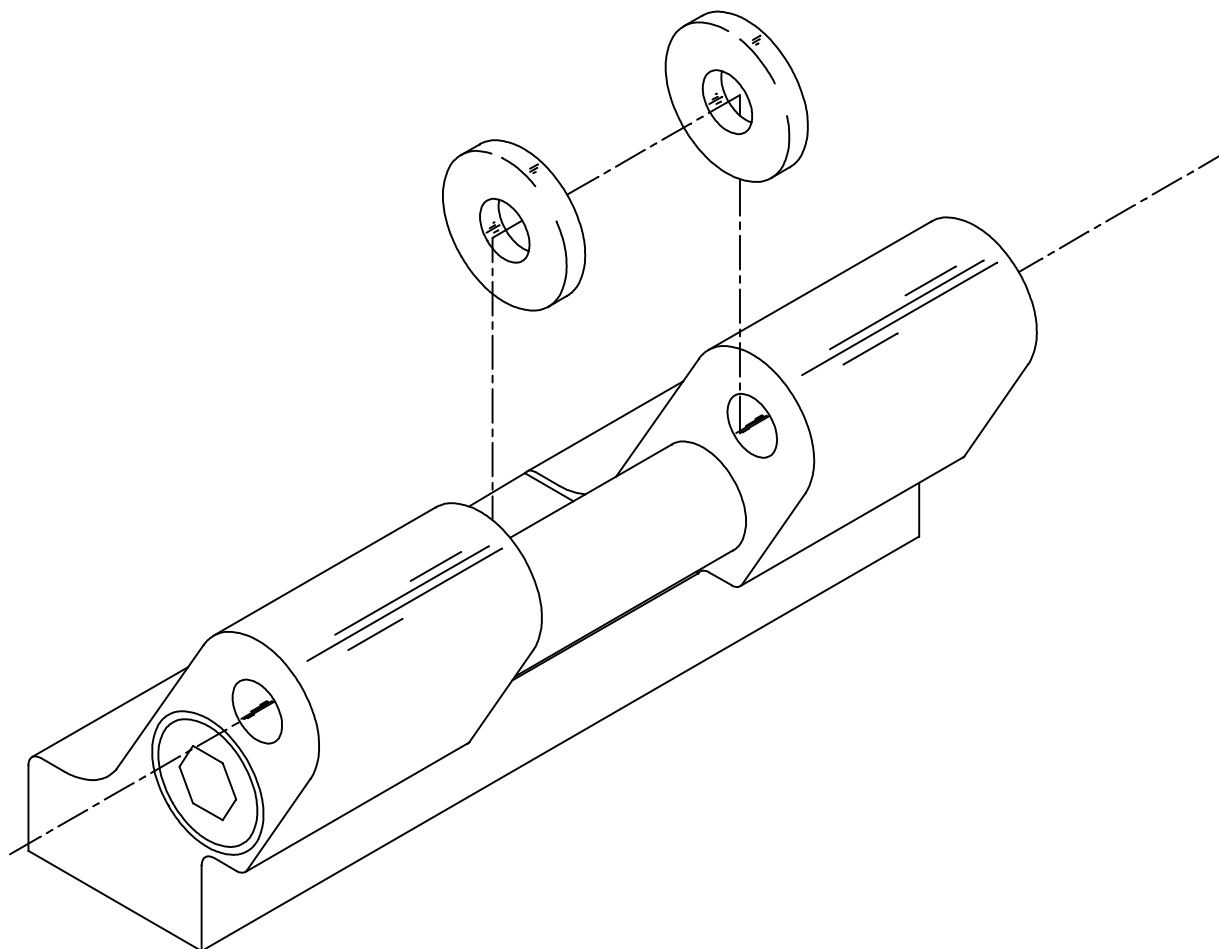
ISSUE

1.2

DATE

26-MAY-00

# LEWMAR



KIT No.

3605229Y9

REFER TO TABLE 'Y' FOR COLOUR VARIATIONS

ATLANTIC PORTLIGHT SPARE PARTS

HINGE KITS

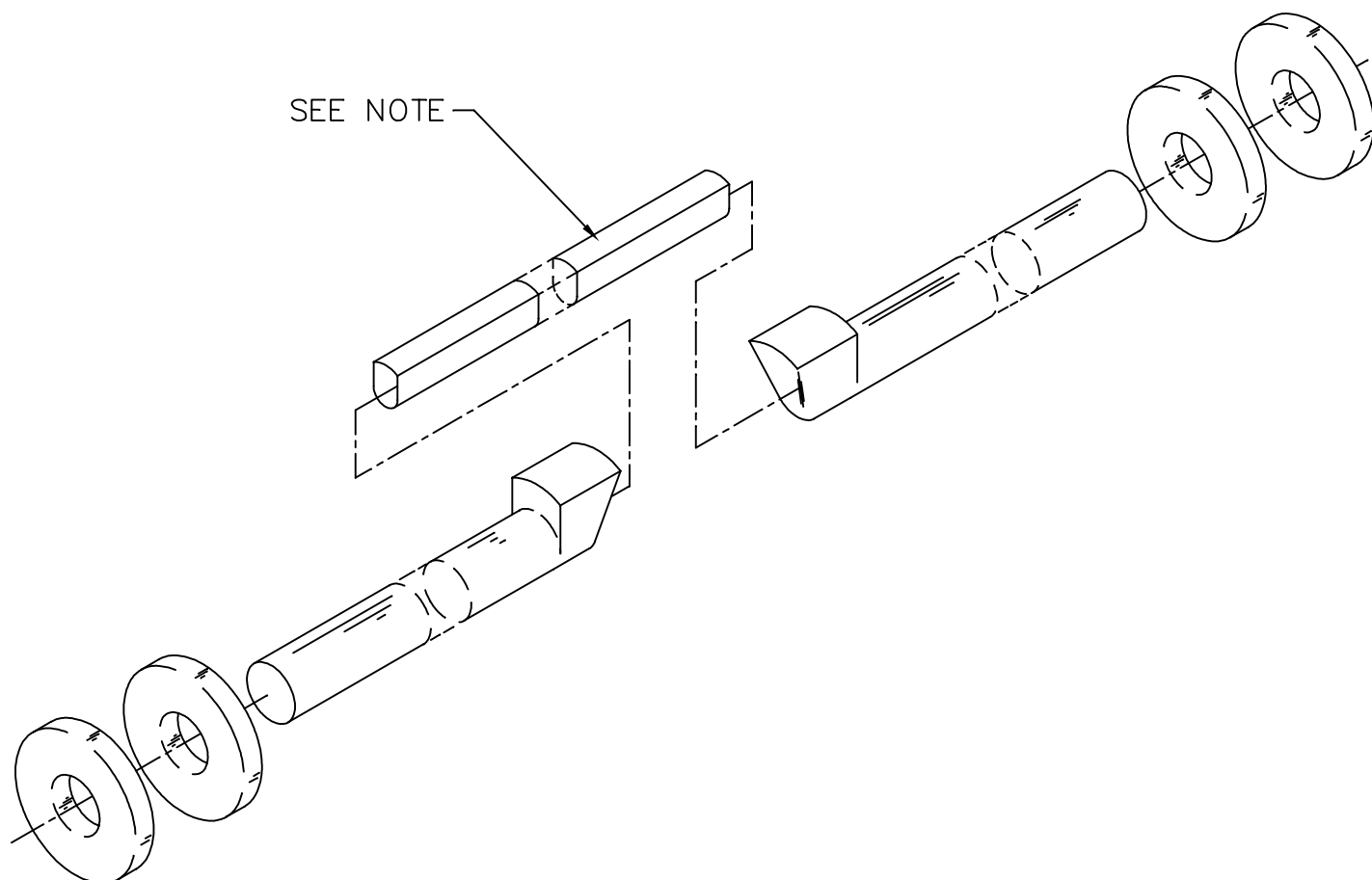
ISSUE

1.1

DATE

5.10.94

# LEWMAR



KIT No.	PORTLIGHT	OVERALL SIZE REF.
360524999	SIZE 10	174 x 304
360525999	ALL OTHER SIZES	—

HINGE PLUG IS CUT TO LENGTH AT ASSEMBLY

## ATLANTIC PORTLIGHT SPARE PARTS

HINGE KITS

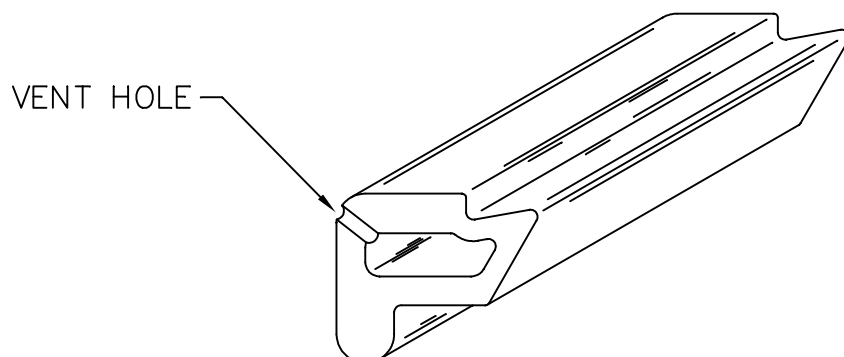
ISSUE

1.1

DATE

5.10.94

# LEWMAR



KIT No.	PORTLIGHT	OVERALL SIZE REF
360526999	SIZE 10	174 x 304
360527999	SIZE 30	200 x 400
360528999	SIZE 32	200 x 400 R END
360790999	SIZE 40	200 x 480
360791999	SIZE 52	241 X 559
360792999	SIZE 60	200 x 600
360793999	SIZE 64	200 x 650

## INSTRUCTIONS

Items required for seal replacement:

solvent based Contact adhesive for fixing seal into frame.

- 1 Remove the old seal by starting to lift the seal in one place and then pull it off all the way around.
- 2 Remove any excessive adhesive remaining in the seal channel, taking care not to damage the frame.
- 3 Apply the contact adhesive sparingly all round the frame channel and firmly press the seal into the frame, ensuring that the seal vent hole is positioned adjacent to a handle catch position.
- 4 Check the seal is pushed fully into the frame channel all the way around.

## ATLANTIC PORTLIGHT SPARE PARTS

SEAL

ISSUE

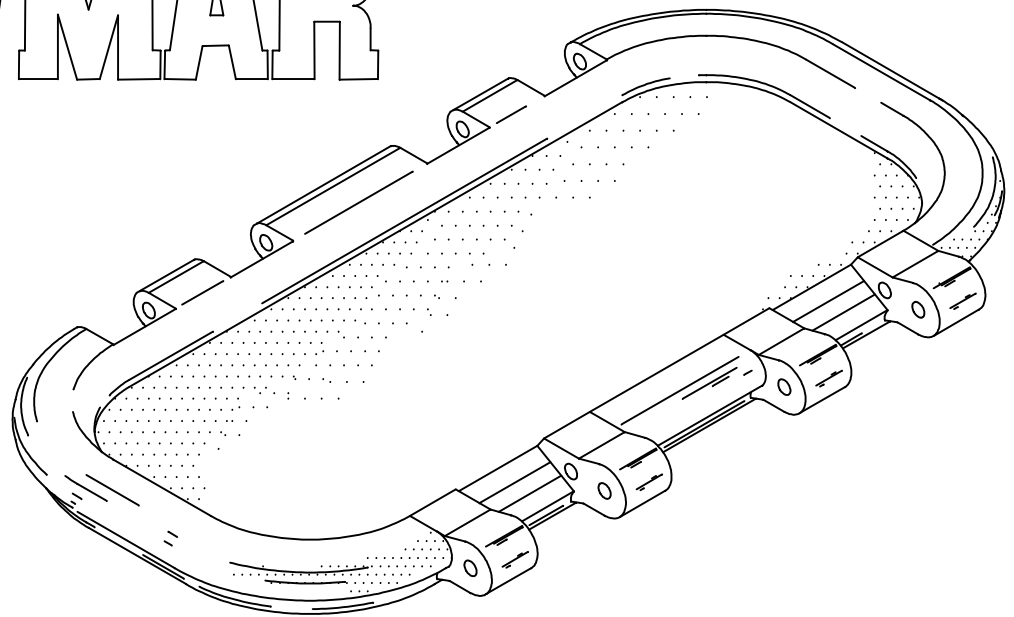
1.3

DATE

2.12.97

# LEWMAR

B5692-3



X DIGIT	ACRYLIC COLOUR
0	SMOKE GREY
1	BRONZE
2	CLEAR
3	WHITE
4	GREEN

Y DIGIT	FRAME COLOUR
0	SILVER ANODISE
1	BLACK ANODISE
2	WHITE PAINT
8	SHINY SILVER

SOME HIGH VOLUME BUILDERS USE  
CUSTOM PAINT COLOURS NOT SHOWN HERE

Mk.1 KIT No.	Mk.2 KIT No.	P'LIGHT	OVERALL SIZE REF
360532XY9	361029XY9	SIZE 10	174 x 304
360533XY9	361030XY9	SIZE 30	200 x 400
360534XY9	361031XY9	SIZE 32	200 x 400 R END
360684XY9	361032XY9	SIZE 40	200 X 480
360685XY9	361033XY9	SIZE 52	241 X 559
360686XY9	361034XY9	SIZE 60	200 X 600
360687XY9	361035XY9	SIZE 64	200 X 650

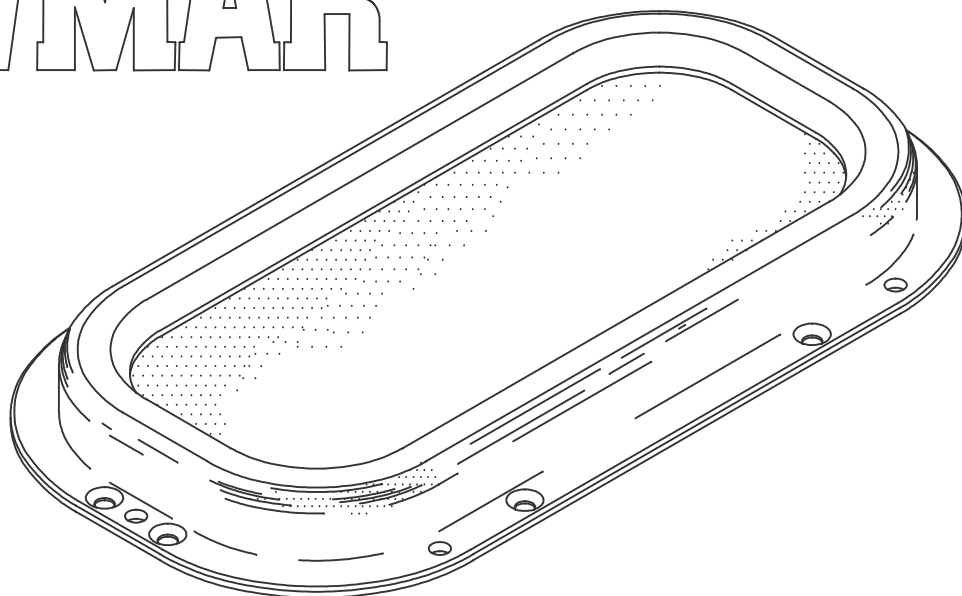
## ATLANTIC PORTLIGHT SPARE PARTS

WINDOW KIT

ISSUE 1.3

DATE 02-JUN-00

# LEWMAR



KIT No.	PORTLIGHT	OVERALL SIZE
360535XY9	SIZE 11	174 x 304
360536XY9	SIZE 31	200 x 400
360537XY9	SIZE 33	200 x 400 R END
360794XY9	SIZE 41	200 X 480
360795XY9	SIZE 53	241 x 559
360796XY9	SIZE 61	200 x 600
360797XY9	SIZE 65	200 x 650

X DIGIT	ACRYLIC COLOUR
0	SMOKE GREY
1	BRONZE
2	CLEAR
3	WHITE
4	GREEN

Y DIGIT	FRAME COLOUR
0	SILVER ANODISE
1	BLACK ANODISE
2	WHITE PAINT
8	SHINY SILVER

SOME HIGH VOLUME BUILDERS USE  
CUSTOM PAINT COLOURS NOT SHOWN HERE

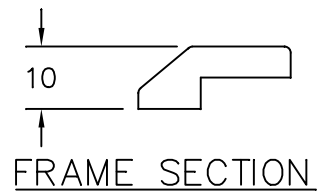
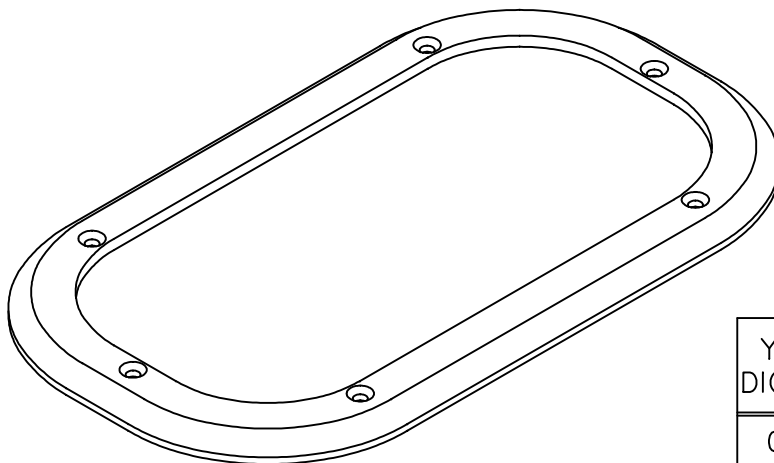
## ATLANTIC FIXEDLIGHT SPARE PARTS

WINDOW KITS

ISSUE 1.3

DATE 26-MAY-00

# LEWMAR



Y DIGIT	FRAME COLOUR
0	SILVER ANODISE
1	BLACK ANODISE
2	WHITE PAINT
8	SHINY SILVER

SOME HIGH VOLUME BUILDERS USE  
CUSTOM PAINT COLOURS NOT SHOWN HERE

KIT No.	PORTLIGHT	OVERALL SIZE REF
3661115Y9	SIZE 11	174 x 304
3661315Y9	SIZE 31	200 x 400
3661335Y9	SIZE 33	200 x 400 R END
3661415Y9	SIZE 41	200 x 480
3661535Y9	SIZE 53	241 x 599
3661615Y9	SIZE 61	200 x 600
3661655Y9	SIZE 65	200 x 650

## ATLANTIC FIXEDLIGHT SPARE PARTS

INNER FRAME KITS

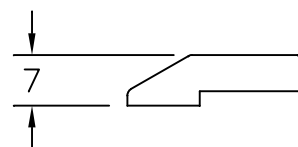
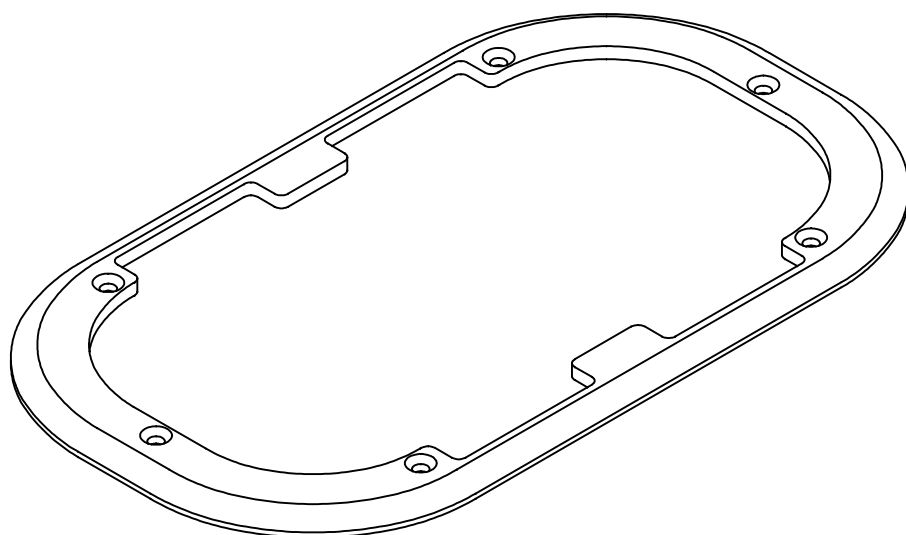
ISSUE

1.3

DATE

31-MAY-00

# LEWMAR



FRAME SECTION

Y DIGIT	FRAME COLOUR
0	SILVER ANODISE
1	BLACK ANODISE
2	WHITE PAINT
8	SHINY SILVER

SOME HIGH VOLUME BUILDERS USE  
CUSTOM PAINT COLOURS NOT SHOWN HERE

KIT No.	PORTLIGHT	OVERALL SIZE
3661101Y9	SIZE 10	174 x 304
3661301Y9	SIZE 30	200 x 400
3661321Y9	SIZE 32	200 x 400 R END
3661401Y9	SIZE 40	200 x 480
3661521Y9	SIZE 52	241 x 559
3661601Y9	SIZE 60	200 x 600
3661641Y9	SIZE 64	200 x 650

## ATLANTIC PORTLIGHT SPARE PARTS

INNER FRAME KITS

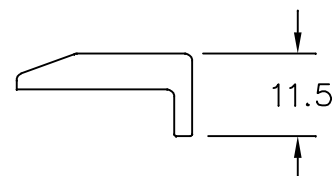
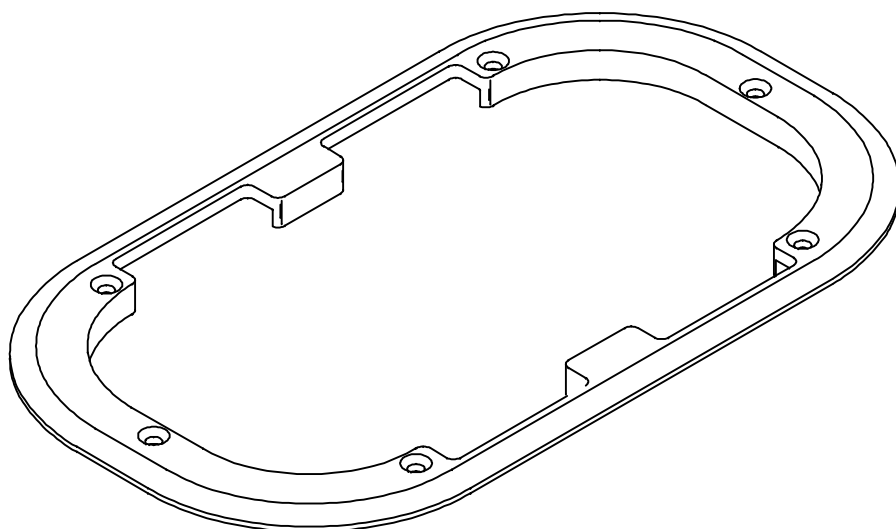
ISSUE

1.3

DATE

02-JUN-00

# LEWMAR



FRAME SECTION

Y DIGIT	FRAME COLOUR
0	SILVER ANODISE
1	BLACK ANODISE
2	WHITE PAINT
8	SHINY SILVER

SOME HIGH VOLUME BUILDERS USE  
CUSTOM PAINT COLOURS NOT SHOWN HERE

KIT No.	PORTLIGHT	OVERALL SIZE
3661104Y9	SIZE 10	174 x 304
3661304Y9	SIZE 30	200 x 400
3661324Y9	SIZE 32	200 x 400 R END
3661404Y9	SIZE 40	200 x 480
3661524Y9	SIZE 52	241 x 559
3661604Y9	SIZE 60	200 x 600
3661644Y9	SIZE 64	200 x 650

## ATLANTIC PORTLIGHT SPARE PARTS

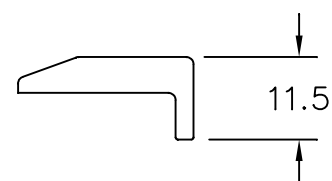
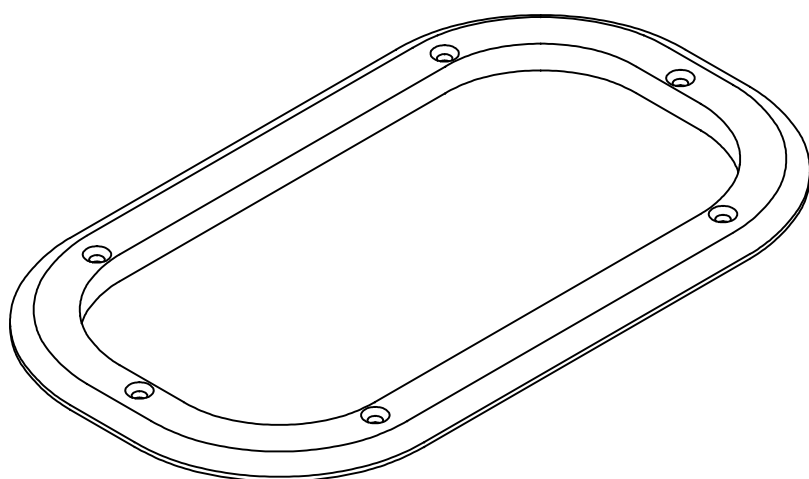
INNER FRAME KITS

ISSUE

1.4

DATE 20-DEC-00

# LEWMAR



FRAME SECTION

Y DIGIT	FRAME COLOUR
0	SILVER ANODISE
1	BLACK ANODISE
2	WHITE PAINT
8	SHINY SILVER

SOME HIGH VOLUME BUILDERS USE  
CUSTOM PAINT COLOURS NOT SHOWN HERE

KIT No.	PORTLIGHT	OVERALL SIZE REF
3661114Y9	SIZE 11	174 x 304
3661314Y9	SIZE 31	200 x 400
3661334Y9	SIZE 33	200 x 400 R END
3661414Y9	SIZE 41	200 x 480
3661534Y9	SIZE 53	241 x 559
3661614Y9	SIZE 61	200 x 600
3661654Y9	SIZE 65	200 x 650

ATLANTIC FIXEDLIGHT SPARE PARTS

INNER FRAME KITS

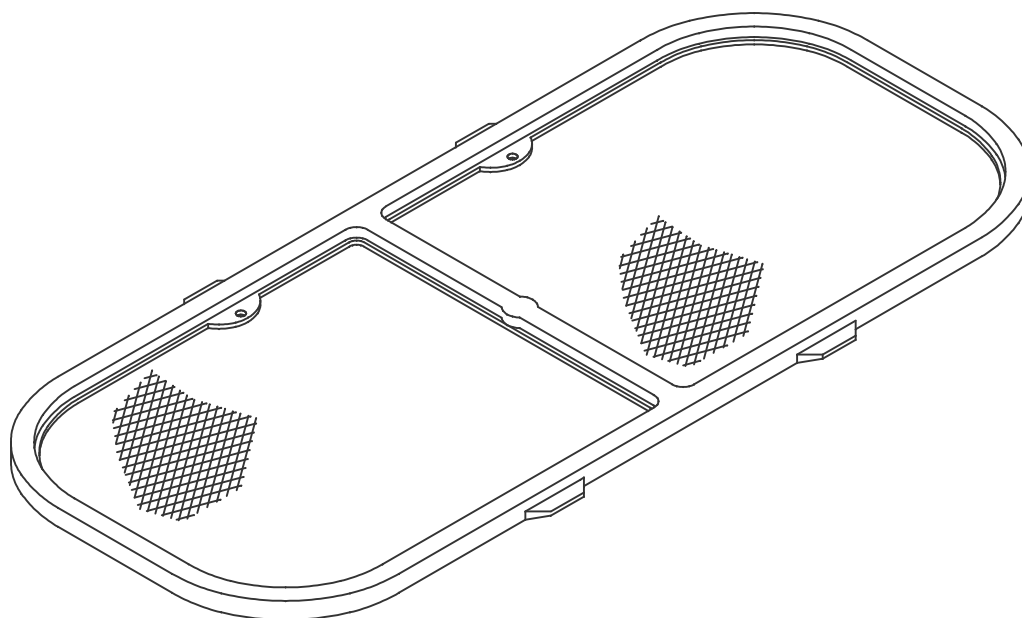
ISSUE

1.2

DATE

13.8.96

# LEWMAR



KIT No.	PORTLIGHT	OVERALL SIZE
367110916	SIZE 10	174 x 304
367130916	SIZE 30	200 x 400
367132916	SIZE 32	200 x 400 R END
367140916	SIZE 40	200 x 480
367152916	SIZE 52	241 x 559
367160916	SIZE 60	200 x 600
367164916	SIZE 64	200 x 650

## ATLANTIC PORTLIGHT SPARE PARTS

FLYSCREEN

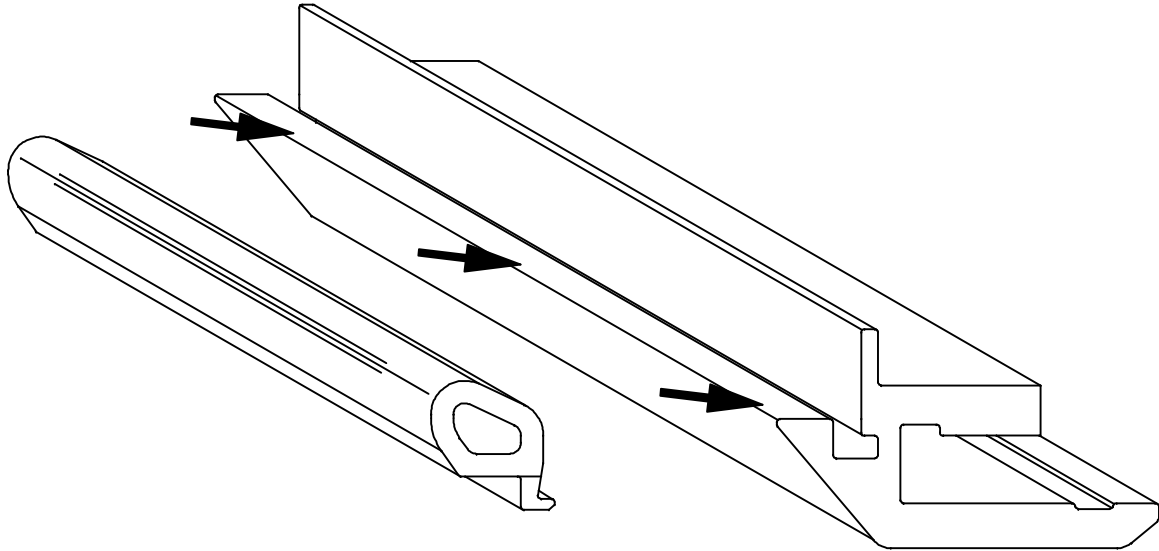
ISSUE

1.2

DATE

14.8.96

# LEWMAR



KIT NUMBER	PORTLIGHT SIZE	PORTLIGHT OVERALL SIZE
360758999	0	176 x 323
360759999	1	191 x 367
361015999	1 RND END	191 x 367
360760999	2	176 x 425
360761999	3	191 x 449
360762999	4	191 x 646
360763999	4L & 4R	195 x 708
360765999	5	264 x 449
360835999	6	146 x 449
361010999	7 RND END	191 x 425

## NEW STANDARD PORTLIGHT SPARE PARTS

SEAL KITS

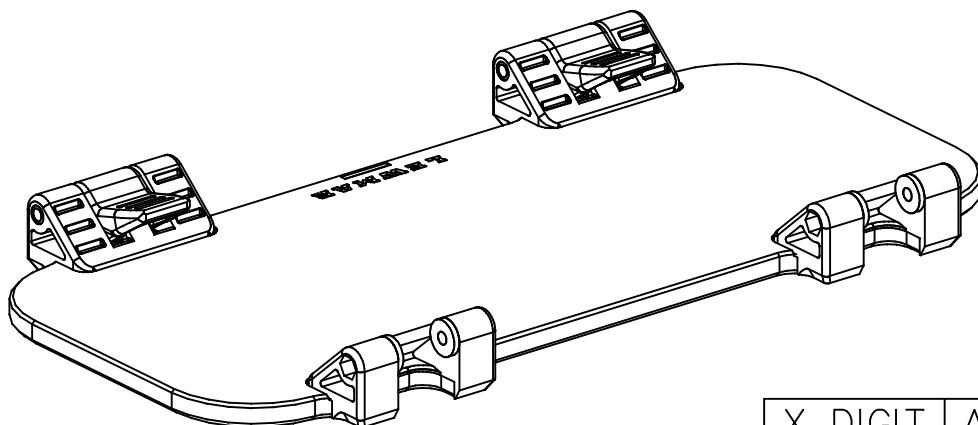
ISSUE

1.4

DATE

20-DEC-00

# LEWMAR



'Z' DIGIT	MOULDING COLOUR
0	STANDARD GREY
1	BENETEAU GREY

X DIGIT	ACRYLIC COLOUR
0	SMOKE GREY
1	BRONZE
2	CLEAR
3	WHITE
4	GREEN

KIT NUMBER	PORTLIGHT SIZE	PORTLIGHT OVERALL SIZE
360750XZ9	0	176 x 323
360751XZ9	1	191 x 367
361014XZ9	1 RND END	191 x 367
360752XZ9	2	176 x 425
360753XZ9	3	191 x 449
360754XZ9	4	191 x 646
360755XZ9	4L	195 x 708
360756XZ9	4R	264 x 449
360757XZ9	5	264 x 449
360834XZ9	6	146 x 449
361009XZ9	7 RND END	191 x 425

HUNTER (USA) USE CHAMFERED ACRYLIC NOT SUPPLIED ON THESE P/N'S

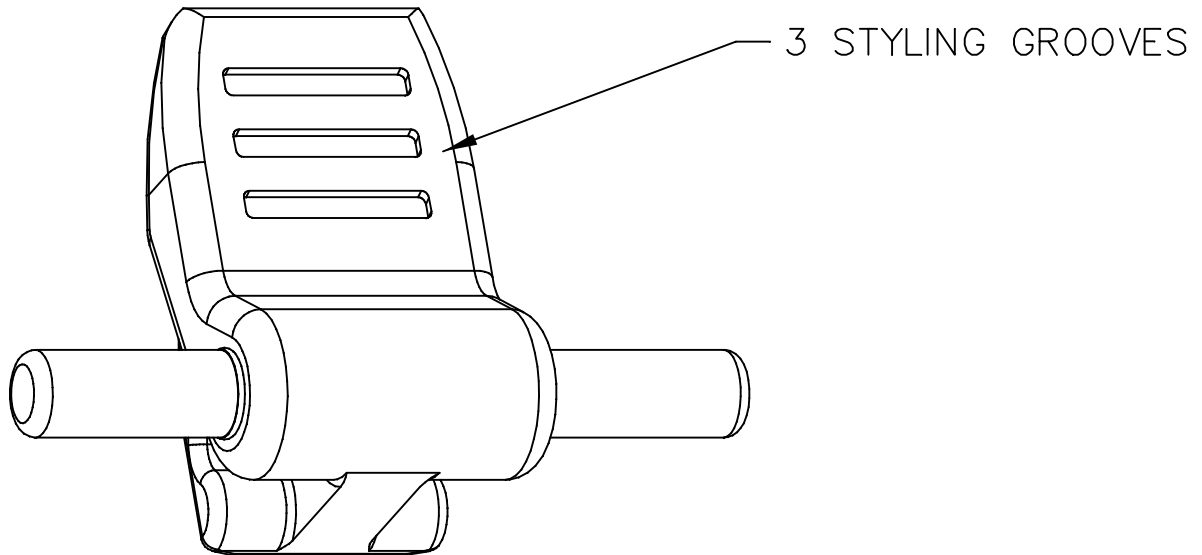
## NEW STANDARD PORTLIGHT SPARE PARTS

WINDOW KITS

ISSUE 1.4

DATE 15-JUN-00

# LEWMAR



## FITTING INSTRUCTIONS

A small G-clamp should be used to push the pin home. One side of the G-clamp should be located on the end of the pin and the other on the end of the moulding which is glued to the acrylic. This is done to minimise the load placed on the glued joint.

KIT NUMBER	HANDLE MATERIAL
360767Z99	PLASTIC
361039999	METAL

## NOTES

New Standard Portlights use only plastic handles.  
Atlantic Portlights use plastic or metal handles

Z = 0 FOR STANDARD GREY AND 1 FOR BENETEAU GREY

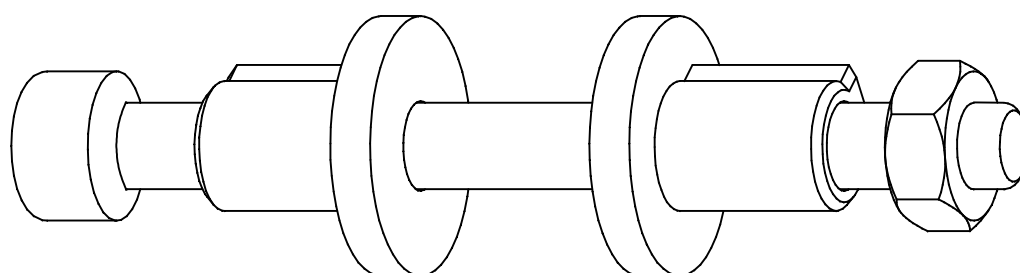
NEW STANDARD AND ATLANTIC Mk.2  
PORTLIGHT SPARE PARTS

HANDLE KIT

ISSUE 1.1

DATE 15-Jun-00

# LEWMAR



Fastening is a standard M4 x 45 Cap Head Socket  
Machine Screw & Nyloc Nut In A2 Stainless Steel

KIT NUMBER
360766Z99

Z = 0 FR STANDARD GREY AND 1 FOR BENETEAU GREY

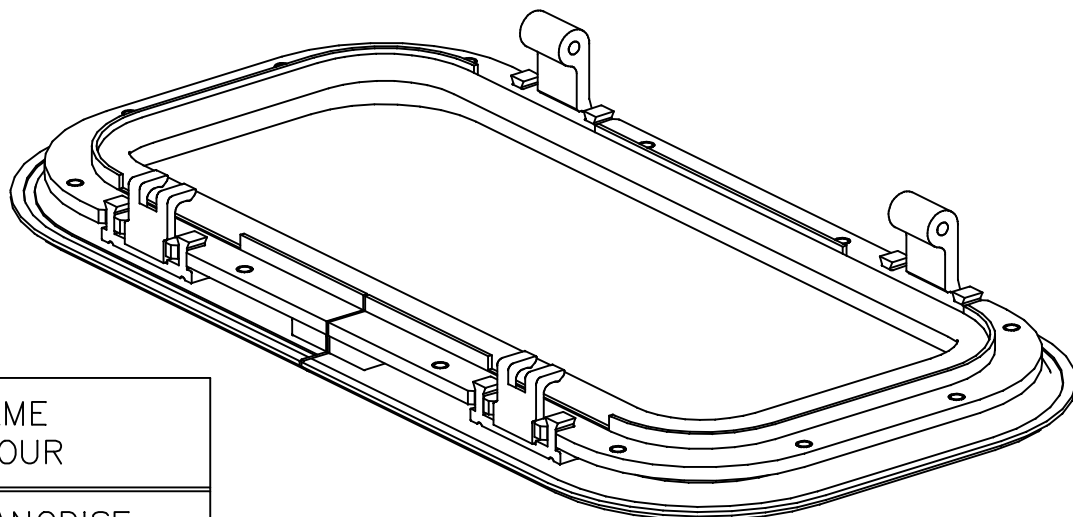
NEW STANDARD PORTLIGHT SPARE PARTS

HINGE PIN KIT

ISSUE 1.1

DATE 15-JUN-00

# LEWMAR



Y DIGIT	FRAME COLOUR
0	SILVER ANODISE
1	BLACK ANODISE
2	WHITE PAINT
8	SHINY SILVER

SOME HIGH VOLUME BUILDERS USE  
CUSTOM PAINT COLOURS NOT SHOWN HERE

KIT NUMBER	PORTLIGHT SIZE	PORTLIGHT OVERALL SIZE
360720Y99	0	176 x 323
360721Y99	1	191 x 367
361011Y99	1 RND END	191 x 367
360722Y99	2	176 x 425
360723Y99	3	191 x 449
360724Y99	4	191 x 646
360725Y99	4L	195 x 708
360726Y99	4R	264 x 449
360727Y99	5	264 x 449
360831Y99	6	146 x 449
361006Y99	1 RND END	191 x 425

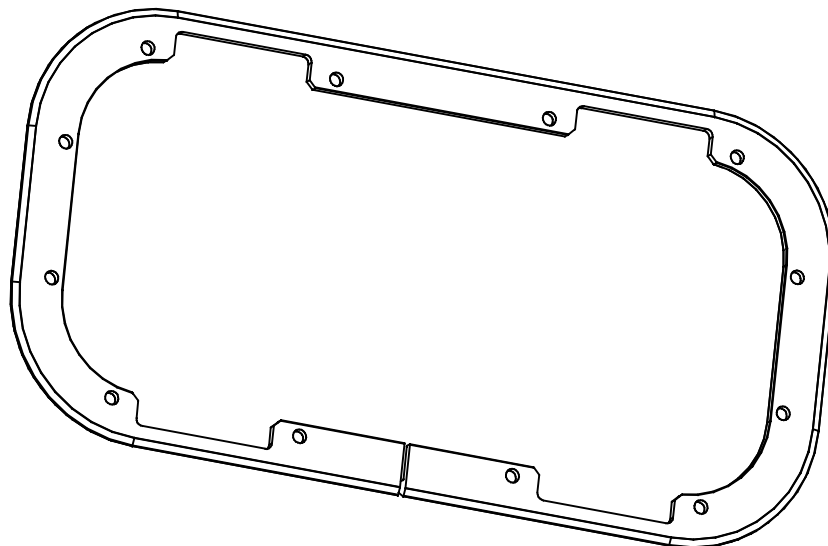
## NEW STANDARD PORTLIGHT SPARE PARTS

OUTER FRAMES

ISSUE 1.3

DATE 15-JUN-00

# LEWMAR



KIT NUMBER	PORTLIGHT SIZE	PORTLIGHT OVERALL SIZE
360735099	0	176 x 323
360736099	1	191 x 367
361013099	1 RND END	191 x 367
360737099	2	176 x 425
360738099	3	191 x 449
360739099	4	191 x 646
360740099	4L	195 x 708
360741099	4R	264 x 449
360742099	5	264 x 449
360833099	6	146 x 449
361008099	7 RND END	191 x 425

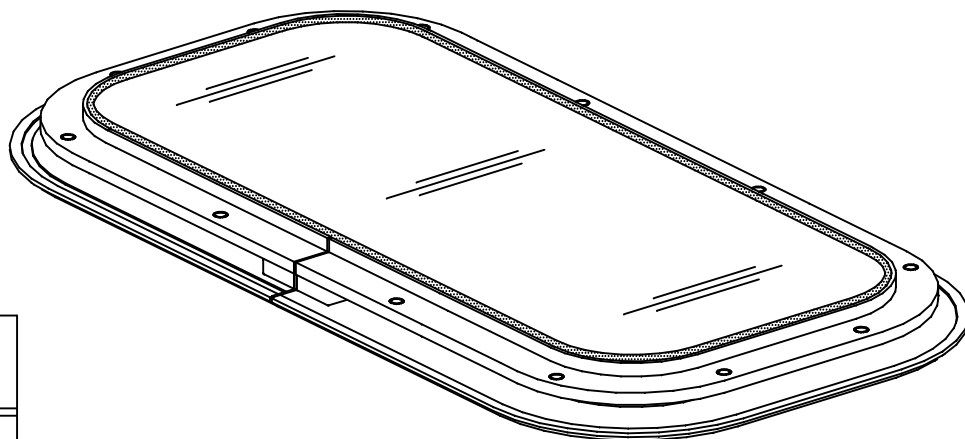
NEW STANDARD PORTLIGHT  
AND FIXEDLIGHT SPARE PARTS

CLAMP RINGS

ISSUE 1.3

DATE 15-JUN-00

# LEWMAR



X DIGIT	ACRYLIC COLOUR
0	SMOKE GREY
1	BRONZE
2	CLEAR
3	WHITE
4	GREEN

Y DIGIT	FRAME COLOUR	Y DIGIT	FRAME COLOUR
0	SILVER ANODISE	2	WHITE PAINT
1	BLACK ANODISE	8	SHINY SILVER

SOME HIGH VOLUME BUILDERS USE CUSTOM PAINT COLOURS NOT SHOWN HERE

KIT NUMBER	FIXEDLIGHT SIZE	FIXEDLIGHT OVERALL SIZE
360728XY9	0	176 x 323
360729XY9	1	191 x 367
361012XY0	1 RND END	191 x 367
360730XY9	2	176 x 425
360731XY9	3	191 x 449
360732XY9	4	191 x 646
360733XY9	4L	195 x 708
360734XY9	4R	264 x 449
NONE	5	264 x 449
360832XY9	6	146 x 449
361007XY9	7 RND END	191 x 425

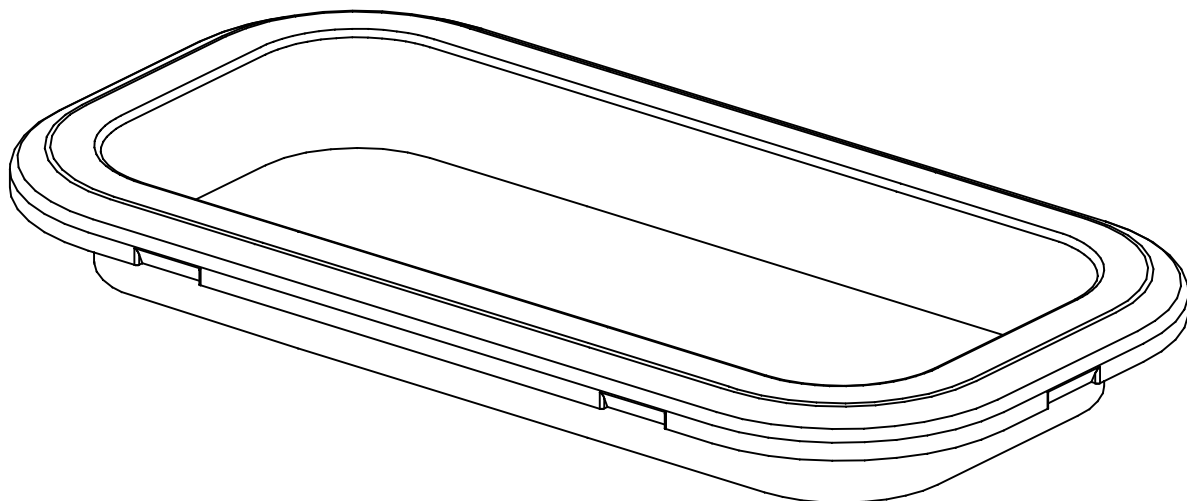
## NEW STANDARD FIXEDLIGHT SPARE PARTS

OUTER FRAME &  
WINDOWS KIT

ISSUE 1.3

DATE 15-JUN-00

# LEWMAR



KIT NUMBER	FIXEDLIGHT SIZE	FIXEDLIGHT OVERALL SIZE
368301W39	0	176 x 323
368311W39	1	191 x 367
368317W39	1 RND END	191 x 367
368321W39	2	176 x 425
368331W39	3	191 x 449
368341W39	4	191 x 646
368345W39	4L	195 x 708
368343W39	4R	195 x 708
368351W39	5	264 x 449
368361W39	6	146 x 449
368377W39	7 RND END	191 x 425

W = 2 FOR WHITE AND 5 FOR IVORY

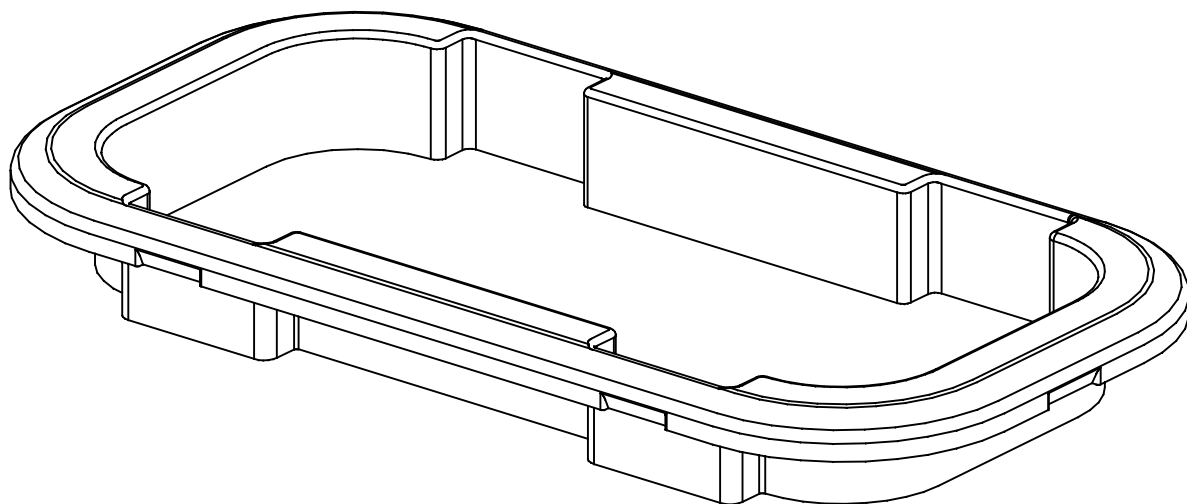
NEW STANDARD FIXEDLIGHT SPARE PARTS

TRIMS

ISSUE 1.3

DATE 15-JUN-00

# LEWMAR



KIT NUMBER	PORTLIGHT SIZE	PORTLIGHT OVERALL SIZE
368302W39	0	176 x 323
368312W39	1	191 x 367
368318W39	1 RND END	191 x 367
368322W39	2	176 x 425
368332W39	3	191 x 449
368342W39	4	191 x 646
368346W39	4L	195 x 708
368344W39	4R	195 x 708
368352W39	5	264 x 449
368362W39	6	146 x 449
368378W39	7 RND END	191 x 425

REFER TO TABLE W FOR TRIM COLOUR VARIANTS

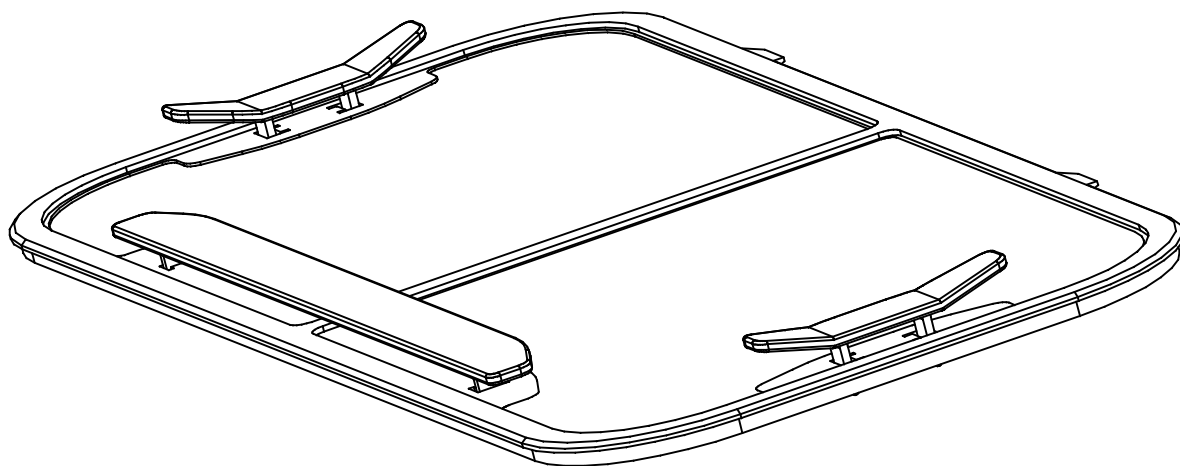
## NEW STANDARD PORTLIGHT SPARE PARTS

TRIMS

ISSUE 1.3

DATE 15-JUN-00

# LEWMAR



KIT NUMBER	PORTLIGHT SIZE	PORTLIGHT OVERALL SIZE
367302916	0	176 x 323
367312916	1	191 x 367
367318916	1 RND END	191 x 367
367322916	2	176 x 425
367332916	3	191 x 449
367342916	4	191 x 646
NONE	4L	195 x 708
NONE	4R	195 x 708
367352916	5	264 x 449
NONE	6	146 x 449
367378916	7 RND END	191 x 425

NEW STANDARD PORTLIGHT SPARE PARTS

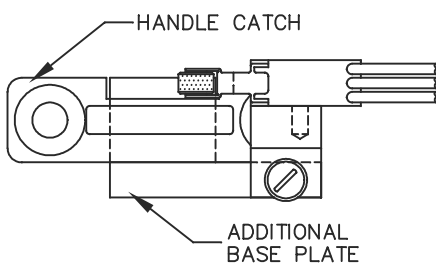
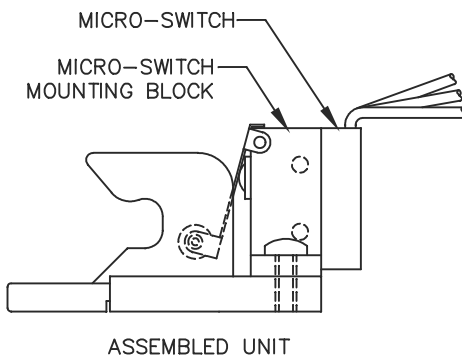
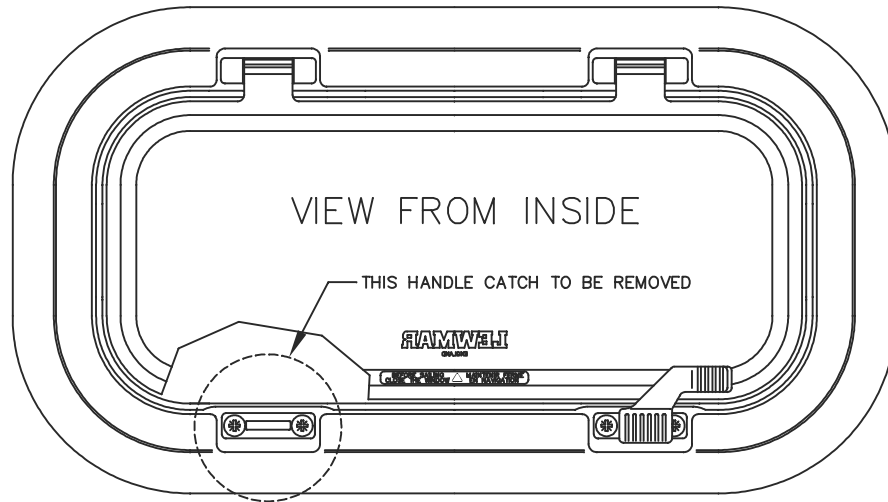
FLYSCREENS

ISSUE 3

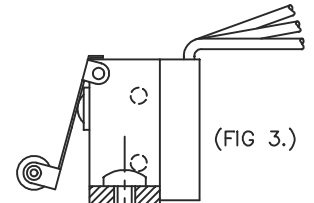
DATE 07-Sep-99

P/N 360782999 OCEAN PORTLIGHT MICRO-SWITCH KIT  
FITTING INSTRUCTIONS

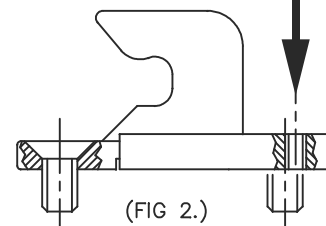
(FIG 1.)

WIRE COLOUR CODE:

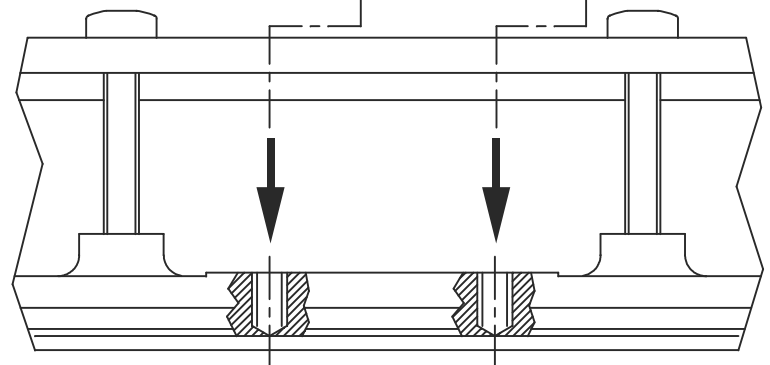
BLUE = NORMALLY OPEN  
RED = COMMON  
YELLOW = NORMALLY CLOSED



(FIG 3.)



(FIG 2.)

FITTING PROCEDURE:

1. REMOVE TRIM AND OPEN PORTLIGHT WINDOW FULLY.
2. UNSCREW AND REMOVE EXISTING HANDLE CATCH (SEE FIG 1).
3. FIT MODIFIED HANDLE CATCH ENSURING ADDITIONAL BASE PLATE IS IN POSITION (SEE FIG 2).
4. FIT MICRO-SWITCH ASSEMBLY USING SCREW SUPPLIED (SEE FIG 3).
5. OFFER TRIM TO PORTLIGHT AND MARK TRIM FOR ANY LOCALISED TRIMMING TO CLEAR MICRO-SWITCH ASSEMBLY.
6. WIRING SHOULD BE ROUTED AND CONNECTED BY A QUALIFIED ELECTRICIAN (SEE COLOUR CODE ABOVE)

NOTES:

- \* MINIMUM HULL THICKNESS OF 20mm TO ALLOW TRIM TO CLEAR WIRING AND TOP OF MICRO-SWITCH.

# LEWMAR

## Portlight and Fixedlight Fitting Instructions

(To be retained in owners manual for future reference)

Lewmar Portlights and Fixedlights are for use on the deck and coachroof of yachts in accordance with **ISO/DIS 12216.2(E), DESIGN CAT. "A", AREAS II, III and IV** for Portlights and **AREAS I, II, III and IV** for Fixedlights. Modification of the product will invalidate the compliance with this directive.

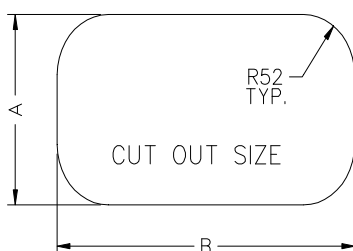
### **Fitting Instructions**

Lewmar Portlight and Fixedlights should be fitted to a flat surface with a maximum tolerance of +/-1mm extending 12mm beyond the planned cutout and a deck / hull thickness if 6-34mm. Hold the inner frame on the inside of the intended position, ensure that a flat bearing area exists over the surface of the inner frame, leaving sufficient clearance for the trim to be fitted, (see sketch of typical cross section).

With a pencil mark out the cutout to the recommended dimension shown.

***The lower edge of product fitted in the hull AREA I should be a minimum of 600mm above the floatation plane in the crafts fully loaded ready-for-use condition, the boat being at rest in the upright condition.***

***Where craft are intended to be operated on 'OCEAN' or 'OFFSHORE' voyages (as defined by ISO/DIS 12216.2(E)), no part of the plate or its framing is to extend beyond the outer surface of the hull or of a built-in-fairing being an integral part of the hull.***



Size No.	Product Size	Dim A		Dim B	
		mm	ins	mm	ins
0	4x10	156	6 $\frac{1}{8}$	303	12
1	5x12	171	6 $\frac{3}{4}$	347	13 $\frac{5}{8}$
2	4x14	156	6 $\frac{1}{8}$	405	16
3	5x15	171	6 $\frac{3}{4}$	429	16 $\frac{3}{4}$
4	5x23	171	6 $\frac{3}{4}$	627	24 $\frac{1}{2}$
5	7x15	244	9 $\frac{5}{8}$	429	16 $\frac{7}{8}$
6	3x15	126	5	429	16 $\frac{7}{8}$

***It is essential that the outer frame is placed squarely on the deck opening. When fitting a number of portlights it is advisable to prepare a template.***

Cut out deck along pencil line using a suitable saw.

Where the deck is of composite construction, it is recommended that the exposed laminate be sealed with the appropriate material prior to fitting the product. Openings cut in metal decks should have all burrs and sharp edges removed.

***Portlights and Fixedlights should not be considered as stiffening members and it is recommended that the deck be adequately stiffened to prevent distortion during heavy weather.***

Measure thickness of skin (and inner trim if fitted).

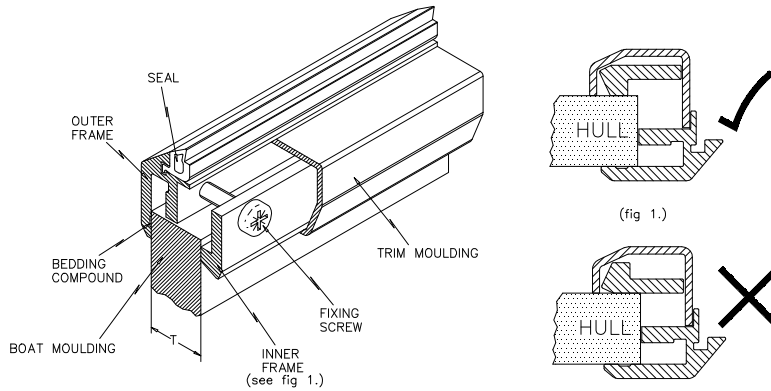
Re-check the frame on aperture and then apply bedding compound to the channel in outer frame. Bedding compound must have good adhesive qualities (eg. silicone sealant), be a suitable grade for marine sealing applications, of 3mm minimum thickness and compressible to allow the outer frame to be pulled down in contact with the deck by the securing screws.

Position the outer frame unit, and with the inner frame joint on the lower edge, bolt firmly in place, working from the centre out to the ends up to a maximum torque of 2.8Nm (25 in.lb). Clean off surplus sealant.

### ***Caution:***

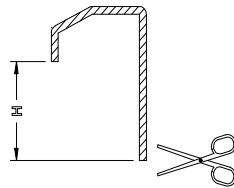
***M5 screws supplied are for skin thickness 17-22mm. It is important that you use the correct length of screw otherwise you will damage the product. Check skin thickness and select correct length of screw from table.***

**Please Turn Over**



**Typical installation cross section**

Portlight shown



**Trim cross section**

Adjust the trim moulding to the calculated length H by cutting the inner edge only to suit, using a fine toothed saw or tin snips, such that when fitted the trim clips to the inner frame. Snap the trim moulding into final position making sure that it clips onto the inner frame and is fully home all around its perimeter. It is a simple matter to remove the trim by prising it away on the outside edge, refit by snapping back onto the inner frame.

For portlight installations, check for correct operation of the window, closing / locking operation, even pressure on the seal etc. Don't forget to leave the flyscreen on board.

Dimension T	Screw	Order No.	Dimension H
6 – 9mm	use M5x12	19899000	H=T-12mm Where: H=Trim length T=boat moulding measurement
8 – 13mm	use M5x16	19899100	
12 – 17mm	use M5x20	19899200	
17 – 22mm	use M5x25	19899300	
22 – 27mm	use M5x30	19899400	
27 – 32mm	use M5x35	19899500	
32 – 34mm	use M5x40	19899600	

**Alternative screw length table**

**User Notes**

Flyscreens, when fitted are located between the outer frame and seal, enabling the portlight to be closed with the flyscreen in place. See the separate sheet for detailed instructions.

If a deadlight is required, we suggest that a plywood, aluminium or fibreglass plate be made to cover the portlight (notched to clear the hinges and handles on opening versions). The portlight trim moulding can then be removed allowing the inner frame to be drilled and tapped to facilitate bolting the deadlight in position.

Always wash the Portlight or Fixedlight with soap, water and a soft cloth.

***Never use abrasive or solvent cleaners on the window, as this may at a later date damage the acrylic.***

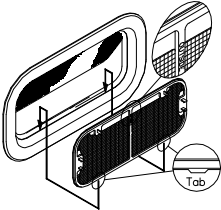
**Please Turn Over**

# LEWMAR

## New Standard Portlight Flyscreen Fitting Instructions

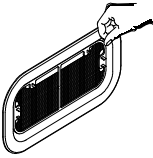
### Outside Fitting – Preferred

If possible, fit the flyscreen from outside of the craft. With the portlight window open.



Insert tabs between the rubber seal and outer frame.

Note: The word OUTSIDE must be outside when correctly installed.



Gently press the flyscreen frame to locate the remainder of the screen between the seal and outer frame.

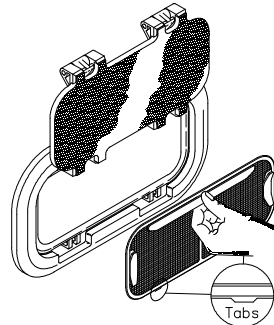
*Once the flyscreen is correctly installed ensure that the straps are laying flat against the flyscreen frame, or they could obstruct closing the window.*

4x10:4x14

5x12 : 5x15  
5x23

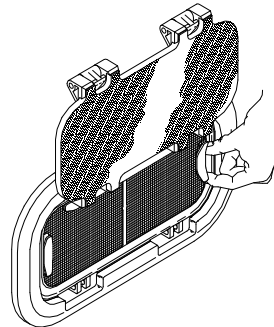
### Inside Fitting

If you wish to fit the flyscreen from inside the boat, straps are fitted to the flyscreen frame to facilitate easier installation.



Holding the long strap, pass the flyscreen through the open portlight.

Insert tabs and bottom edge of the screen between the rubber seal and outer frame. Gently pull the flyscreen, easing the top edge into position, (excessive force might pull the screen past the seal).



Once satisfied that the top and bottom edges are correctly located, the ends can now be gently pulled into position with the aid of the small straps, (excessive force might pull the screen past the seal).

*Once the flyscreen is correctly installed ensure that the straps are laying flat against the flyscreen frame, or they could obstruct closing the window.*

---

Lewmar Marine Ltd Southmoor Lane Havant Hampshire PO9 1JJ England Tel (44) 01705 471841

## REPLACING STANDARD PORTLIGHT SEALS

### **1) Check The Seal.**

Check that the seal which you have ordered is the correct size for the portlight which is to have the seal replaced.

### **2) Remove The Old Seal.**

The seal is held in place by an arrowhead which is forced into a cavity in the aluminium extrusion of the outer frame of the portlight. In addition silicone sealant has been applied to the cavity to aid assembly and help prevent leaks (see drawing on reverse).

### **3) Clean Out The Cavity In The Aluminium Outer Frame.**

This may be done using a plastic scraper. Solvents should not be used to remove the old silicone sealant because they may attack or otherwise damage the outer frame. It may also result in damage or increase weathering of the acrylic should it come into contact with the window.

### **4) Dry Fit The Seal**

The seal is not the same on both sides, there is a slight step which appears as a line along the seal. On one side of the seal the step is further away from the arrowhead than on the other. Fit the seal with the step furthest from the arrowhead closest to the centre of the portlight (see drawing on reverse).

Push the arrowhead into the cavity, a thin roller or blunt plastic "pusher" will make this easier. Work from the middle of the portlight to the ends, doing the top and bottom edge first. Work the corners in second and finish with the ends. The join in the seal should end up in line with one of the hinges.

If the seal will not go into place it is possible that there may be some of the old sealant left in the extrusion.

When the seal is dry fitted it should be possible to close the portlight.

### **5) Apply Sealant & Fit The Seal**

Apply a bead of sealant all the way around the inside of the cavity. Fit the seal, close the portlight and leave for the seal to dry.

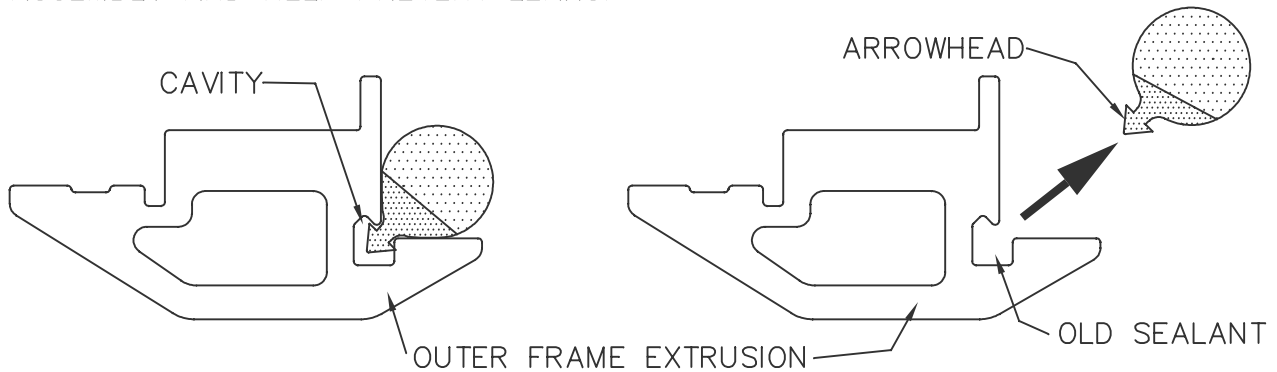
For drawings see sheet B5963-B on reverse

# LEWMAR

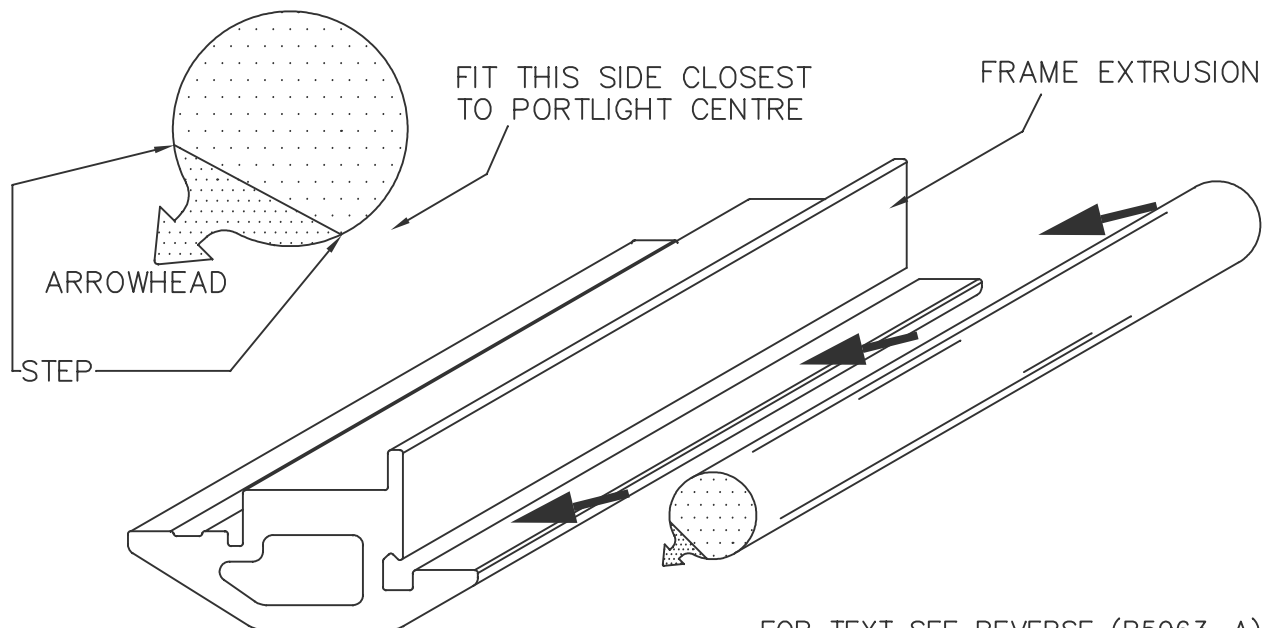
B5963-B

## REPLACING STANDARD PORTLIGHT SEALS

THE OLD SEAL IS HELD IN PLACE BY AN ARROWHEAD WHICH IS FORCED INTO A CAVITY IN THE ALUMINIUM EXTRUSION OF THE OUTER FRAME OF THE PORTLIGHT. IN ADDITION, SILICONE SEALANT HAS BEEN APPLIED TO THE CAVITY TO AID ASSEMBLY AND HELP PREVENT LEAKS.



WHEN REFITTING THE SEAL IT IS IMPORTANT TO NOTE THAT THE SEAL IS NOT THE SAME ON BOTH SIDES, THERE IS A SLIGHT STEP WHICH APPEARS AS A LINE ALONG THE SEAL. ON ONE SIDE OF THE SEAL THE STEP IS FURTHER AWAY FROM ONE SIDE THAN THE OTHER. FIT THE SEAL WITH THE STEP FURTHEST FROM THE ARROWHEAD CLOSEST TO THE CENTRE OF THE PORTLIGHT.



FOR TEXT SEE REVERSE (B5963-A)

REPLACEMENT SEALS

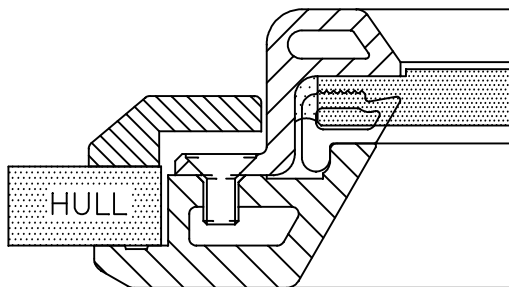
ISSUE

2

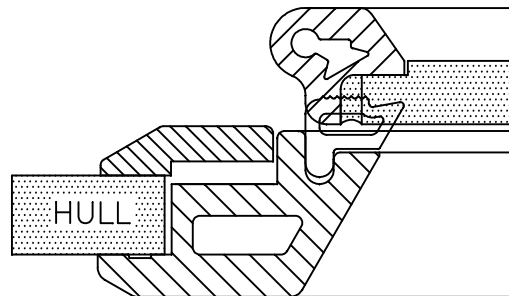
DATE

04.02.97

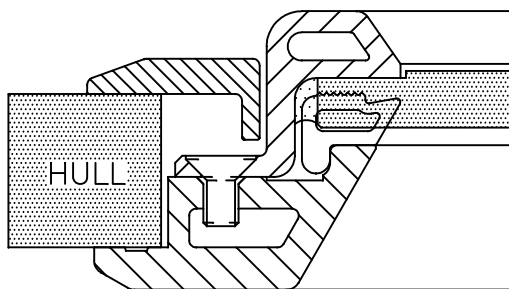
# ATLANTIC PORTLIGHT & FIXEDLIGHT VALANCES & HULL THICKNESS



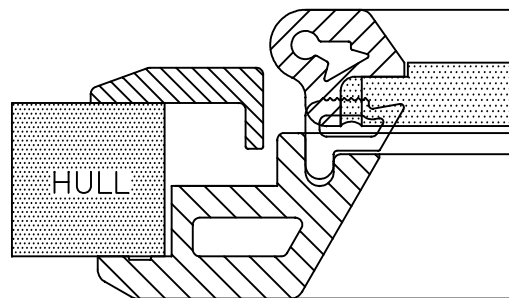
FIXEDLIGHT WITH THIN HULL (AL)  
VALANCE, HULL THICKNESS  
8 TO 24mm



PORTLIGHT WITH THIN HULL (AF)  
VALANCE, HULL THICKNESS  
8 TO 15mm



FIXEDLIGHT WITH THICK HULL (AV)  
VALANCE, HULL THICKNESS  
20 TO 35mm



PORTLIGHT WITH THICK HULL (AV)  
VALANCE, HULL THICKNESS  
16 TO 24mm NB. OPENING MAY  
RESTRICTED ON THICKER HULLS

## LEWMAR LIMITED WARRANTY

Lewmar warrants its products in normal usage to be free of defects in materials and workmanship for a period of three years from date of purchase by the original purchaser, subject to the conditions, limitations and exceptions listed below. Any part, which proves to be defective in normal usage during that three-year period, will be repaired or at Lewmar's option, replaced by Lewmar.

### A CONDITIONS AND LIMITATIONS

- i Lewmar's liability shall be limited to repair or replacement of the goods or parts defective in materials or workmanship.
- ii Determination of the suitability of the material for the use contemplated by the buyer is the sole responsibility of the buyer and Lewmar shall have no responsibility in connection with such suitability.
- iii Lewmar shall not be liable in any way for:
  - a Failures, loss or damage due to use of products in applications for which they are not intended.
  - b Failures, loss or damage due to corrosion, ultra violet degradation, wear and tear or improper installation.
  - c Failures, loss or damage due to incorrect maintenance.
  - d Failures, loss or damage due to conditions that exceed the product's performance specifications.
- iv Product subject to warranty claim must be returned to Lewmar for examination unless otherwise agreed by Lewmar in writing.
- v Lewmar shall not be responsible for shipping charges nor installation labour associated with any warranty claim.
- vi Service by anyone other than authorised Lewmar representatives shall void this warranty unless it accords with Lewmar guidelines and standards of workmanship.
- vii Lewmar's products are intended for use only for marine purposes. Buyers intending to use them for any other purpose should seek advice from Lewmar, and Lewmar shall be under no liability arising from use, which Lewmar has not approved.

### B EXCEPTIONS

Warranty is limited to a period of one year from the date of purchase in the case of the following:

- Bow thrusters
- Electric motors and electrical equipment
- Electronic controls
- Hydraulic pumps, valves and actuators
- Weather seals
- Products used in "Grand Prix" racing applications

## C LIABILITY

- i Lewmar's liability under this warranty shall be to the exclusion of all other warranties or liabilities (to the extent permitted by law). In particular (but without limitation):
  - a Lewmar shall not be liable for:
    - Any indirect or consequential loss including (without limitation) any loss of anticipated profits, damage to reputation or goodwill, loss of expected future business, damages, costs or expenses payable to any third party or any other indirect losses.
    - Any damage to yachts or equipment.
    - Death or personal Injury (unless caused by Lewmar's negligence).
  - b Lewmar grants no warranties regarding the fitness for purpose, use, nature or satisfactory quality of the goods.
- ii Where the laws of the country do not permit a warranty to be excluded, then such warranty, if permitted by that country's law, shall be limited to a period of one year.

## D SEVERANCE CLAUSE

If any clause of these warranties is held by any competent authority to be invalid or unenforceable in whole or in part of the validity of the other clauses of this warranty and the remainder of the clause in question shall not be affected.

- E This warranty gives you specific legal rights, and you may also have other legal rights, which vary, from country to country.

Where the products are sold in the UK under a consumer transaction, the buyer's statutory rights are not affected  
Lewmar Limited reserves the right to alter design and specification without prior notice.

## **TERMS AND CONDITIONS OF SALE**

All sales are subject to Lewmar's General Terms and Conditions of Sale, which can be obtained from Lewmar Limited Head Office in Havant. The foregoing warranty and the following General Conditions of Sale form part only of, but also supplement, Lewmar's General Terms and Conditions of Sale. In the event of any conflict between the foregoing warranty and the following General Conditions of Sale on the one hand and Lewmar's full General Terms and Conditions of Sale on the other, Lewmar's full General Terms and Conditions of Sale shall prevail.

### **Prices**

All prices are subject to change without prior notice due to the fluctuating costs of materials and wages. Prices are ex-warehouse and are those ruling at the date of despatch and exclude VAT, which will be charged as appropriate.

### **Quotations**

Any quotation is open for acceptance for a period of 30 days from the date of quotation. Quotations can only be regarded as firm when they are put in writing. (Verbal estimates are made purely for indicative purposes.)

### **Return of goods**

RETURNED GOODS WILL NOT BE ACCEPTED NOR CREDIT ISSUED UNLESS THE RETURN IS AUTHORISED BY LEWMAR IN WRITING.

An authorisation will be issued on approval of return.

All carriage charges on returned goods must be prepaid.

All returned goods accepted and subsequently returned to our stock will be subject to a 15% restocking charge.

Items returned in a damaged condition will not be credited at full value.

Custom fabricated items or parts will not be accepted for return.

### **Catalogues**

Sales literature and product manuals are available from Lewmar on request. These items can also be ordered from our Web site.

### **Availability**

Goods can be obtained from your local boat builder or chandler. We will be pleased to inform you of your nearest supplier.